



*'The Council and Staff of the Shire of Boddington, in partnership with the community,  
are committed to operating effectively and efficiently to provide quality lifestyle  
opportunities  
that encourage population growth and development'*

## MINUTES

For The  
Ordinary Meeting of Council  
To Be Held At

5PM, TUESDAY 18 OCTOBER 2016

Council Chambers  
39 Bannister Rd, Boddington

# DISCLAIMER

No responsibility whatsoever is implied or accepted by the Shire of Boddington for any act, omission or statement or intimation occurring during Council/Committee meetings or during formal/informal conversations with staff. The Shire of Boddington disclaims any liability for any loss whatsoever and howsoever caused arising out of reliance by any person or legal entity on any such act, omission or statement or intimation occurring during Council/Committee meetings or discussions. Any person or legal entity who acts or fails to act in reliance upon any statement does so at that person's or legal entity's own risk.

In particular and with derogating in any way from the broad disclaimer above, in any discussion regarding any planning application or application for a licence, any statement or limitation of approval made by a member or officer of the Shire of Boddington during the course of any meeting is not intended to be and is not taken as notice or approval from the Shire of Boddington. The Shire of Boddington warns that anyone who has an application lodged with the Shire of Boddington must obtain and only should rely on WRITTEN CONFIRMATION of the outcome of that application and any conditions attaching to the decision made by the Shire of Boddington in respect of the application.

# Minutes

1.	DECLARATION OF OPENING:	4
2.	ATTENDANCE/APOLOGIES/LEAVE OF ABSENCE:	4
2.1.1	Attendance	4
2.1.2	Apologies	4
2.1.3	Leave of Absence	4
3.	DISCLOSURE OF FINANCIAL INTEREST:	4
4.	PUBLIC QUESTION TIME:	5
4.1	RESPONSE TO PREVIOUS QUESTIONS TAKEN ON NOTICE:	5
4.2	WRITTEN QUESTIONS PROVIDED IN ADVANCE:	5
4.3	PUBLIC QUESTIONS FROM THE GALLERY:	5
5.	PETITIONS/DEPUTATIONS/PRESENTATIONS/ SUBMISSIONS:	5
6.	CONFIRMATION OF MINUTES:	5
6.1.1	Ordinary Meeting of Council held on Tuesday 20 September 2016	5
7.	ANNOUNCEMENTS BY PRESIDING MEMBER WITHOUT DISCUSSION:	6
8.	REPORTS OF OFFICERS AND COMMITTEES:	7
8.1	PLANNING CONSULTANT:	7
8.2	MANAGER FINANCIAL SERVICES:	7
8.2.1	Monthly Financial Statements – September 2016	7
8.2.2	List of Payments September 2016	20
8.3	PRINCIPAL ENVIRONMENTAL HEALTH OFFICER/ BUILDING SURVEYOR:	29
8.4	MANAGER WORKS & SERVICES:	29
8.5	DIRECTOR CORPORATE & COMMUNITY SERVICES:	30
8.5.1	Fire Access Track Exemptions	30
8.6	CHIEF EXECUTIVE OFFICER:	35
8.6.1	Action Sheet	35
8.6.2	Request for Haul Road Crossing – Lower Hotham Rd	36
8.6.3	Waiving of Fees for Boddington Arts Council	45
8.6.4	Actions Performed Under Delegated Authority For The Month Of September 2016	48
9.	ELECTED MEMBERS' MOTION OF WHICH PREVIOUS MOTION HAS BEEN GIVEN:	50
10.	URGENT BUSINESS WITHOUT NOTICE WITH THE APPROVAL OF THE PRESIDENT OR MEETING:	50
11.	CONFIDENTIAL ITEM:	50
12.	CLOSURE OF MEETING:	50

## 1. DECLARATION OF OPENING:

The Shire President, Cr Allert declared the meeting open at 5:00pm.

## 2. ATTENDANCE/APOLOGIES/LEAVE OF ABSENCE:

### 2.1.1 Attendance

Cr J Allert	President
Cr M Glynn	Deputy Shire President
Cr N Crilly	
Cr E Hoek	
Cr S Manez	
Mr C Littlemore	Chief Executive Officer
Mr J Rendell	Manager Financial Services
Ms T Hodder	Acting Executive Assistant

6 members of the public attended the meeting.

### 2.1.2 Apologies

Cr T Collins	
Cr D Smart	
Mr G Bartle	Director of Corporate & Community Services

### 2.1.3 Leave of Absence

Councillor Allert has requested leave of absence for the December and January meetings of Council.

**COUNCIL RESOLUTION**                      **79/16**                      **Moved Cr Glyn**

Councillor Allert has requested leave of absence for the December and January meetings of Council.

**Seconded**                      **Cr Manez**                      **Carried**                      **5/0**

## 3. DISCLOSURE OF FINANCIAL INTEREST:

Cr Hoek declared a Proximity Interest in Item 8.5.1 as she is the joint owner of property adjoining Worsley/South 32; land Lot 5 Harvey Quindanning Road, Boddington.

Cr Hoek declared a Financial Interest in Item 8.6.2 as she is the joint owner of property adjoining Worsley/South 32; land Lot 5 Harvey Quindanning Road, Boddington.

4. PUBLIC QUESTION TIME:

Nil.

4.1 RESPONSE TO PREVIOUS QUESTIONS TAKEN ON NOTICE:

Nil.

4.2 WRITTEN QUESTIONS PROVIDED IN ADVANCE:

Nil.

4.3 PUBLIC QUESTIONS FROM THE GALLERY:

Nil.

5. PETITIONS/DEPUTATIONS/PRESENTATIONS/SUBMISSIONS:

Nil.

6. CONFIRMATION OF MINUTES:

6.1.1	Ordinary Meeting of Council held on Tuesday 20 September 2016
-------	---

That the minutes of the Ordinary Meeting of Council held on Tuesday 20 September 2016 be confirmed as a true record of proceedings.

COUNCIL RESOLUTION	80/16	Moved Cr Crilly
--------------------	-------	-----------------

That the minutes of the Ordinary Meeting of Council held on Tuesday 20 September 2016 be confirmed as a true record of proceedings.

Seconded	Cr Manez	Carried	5/0
----------	----------	---------	-----

7. ANNOUNCEMENTS BY PRESIDING MEMBER WITHOUT DISCUSSION:

Nil.

## 8. REPORTS OF OFFICERS AND COMMITTEES:

### 8.1 PLANNING CONSULTANT:

Nil.

### 8.2 MANAGER FINANCIAL SERVICES:

#### 8.2.1 Monthly Financial Statements – September 2016

Disclosure of Interest: Nil  
Date: 10 October 2016  
Author: J Rendell – Manager Financial Services  
Attachments: 8.2.1A Financial Statements – September 2016

#### Summary

Council is to consider Monthly Financial Reports for September 2016.

#### Background

In accordance with Local Government (Financial Management) Regulations 1996 Council is to adopt Monthly Financial Report including the Operating Statement, Statement of Financial Position at the end of each month. Council has also wishes to consider a summary of financial reconciliations on a monthly basis.

Councillors have the opportunity to query financials before the meeting to satisfy themselves before the item comes before Council.

#### Comment

The Operating Statement, Statement of Financial Position, Statement of Cash flow, Statement of Financial Activity and Summary of Reconciliations are submitted for the month of September 2016.

#### FINANCIAL SUMMARY YEAR TO DATE SEPTEMBER 2016

The following is provided to assist in the understanding of Councils financial position. It is emphasised that the comparatives and comments are relative to the approved budget. The Shire of Boddington's financial position for year ended 30<sup>th</sup> June 2016 (finalised but not signed off by audit) has been incorporated into the reports to provide comparatives and assist in reconciliations where relevant.

#### OPERATING RESULT

#### REVENUE

Revenue is 3.1% or \$152k unfavourable to budget. Within the main items the following is noted:-

- **Operating Grants** is 35% or \$123k unfavourable to budget:-
  - \$80k unfavourable in relation to Bushfire Management Planning Co-ordinator (this will be corrected in the budget review, whereby some of the funds received in 2015/16 were unspent and will be funded from the restricted reserves and not income
  - \$35k favourable for the Road safety alliance whereby the Alliance parties have now chosen not to levy members for this financial year, other than Yan Coal, (this has been addressed in the 2016/17 budget review)
  - \$7k unfavourable for the Childcare contribution form Newmont Boddington Gold ,this represents a timing difference only.
- **Fees & Charges** is 6.0% or \$25k unfavourable to budget.
- **Interest Earnings** is 4.4% or \$1k unfavourable to budget.
- **Other Revenue** is 62.2% or \$19k favourable to budget, primarily due to reimbursement from insurance items of \$19k.
- **Profit from Asset sales** it is noted that there is not expected to be any profit from asset sales.

#### EXPENDITURE

**Expenditure** is 3.3% or \$52k unfavourable to budget. Within the main items the following is noted:-

- **Employee costs** are only 6.8% or \$41k favourable to budget.
- **Materials and contracts** are collectively 4.2% or \$16k unfavourable to budget, it is too early in the year and the variance is considered as only timing.
- **Utility charges** are 18% or \$12k unfavourable to budget.
- **Depreciation** is 13% or \$46k unfavourable to budget.
- **Insurance expenses** is 15% or \$15k unfavourable to budget.
- **Other expenditure** is 7% or \$2k unfavourable to budget.

#### NET RESULT

The net result shows a 6.0% or \$204k unfavourable result to budget, due to total revenue being \$152k unfavourable and expenditure being \$52k unfavourable to budget.

#### CAPITAL ITEMS

Capital revenue is 279% or \$422k favourable to budget, due to:-

- \$152k favourable from the Recreation Centre grant, which was not budgeted in 2016/17, but will be corrected in the budget review.
- \$45k favourable from Regional Road Group grant, which was received earlier than anticipated.
- \$300k favourable from the Independent Care Living grant, which was not budgeted in 2016/17, but will be corrected in the budget review.
- These are partially offset by Roads to Recovery grant of \$76k unfavourable, which is only a timing issue.



Capital expenditure is 225% or \$974k unfavourable to budget, mainly due to the Recreation Centre & Visitor Information Centre both being unbudgeted items in 2016/17, these will be addressed in the budget review. For a more detailed understanding refer to the Capital Expenditure By Asset Class report.

## FUNDING ITEMS

Repayment of loan principal; is in line with budget.

## RESERVE ITEMS

It is noted that this line item has been allocated at year end, the significant reserve movement is as a result of significant under expenditure in respect of capital expenditure for land and buildings. This will form a significant part of the restricted funds at year end and is addressed in the budget review.

## CASH & INVESTMENTS

Cash and investments sits at \$9.3M, this represents a decrease of \$1M from the previous month, mainly due to cash receipts being lower, mainly due to receipt of rates and outlays being lower and expenses being higher. It is emphasised however that the majority of funds is tagged as "restricted" and therefore cannot form part of Council's unrestricted or free cash.

## SUMMARY

The financial result is on budget.

Strategic Implications - Nil

Statutory Environment - Local Government (Financial Management) Regulations 1996

Policy Implications - Nil

Economic Implications - Nil

Social Implications - Nil

Environmental Considerations - Nil

Consultation - Nil

## OFFICER'S RECOMMENDATION – 8.2.1

That Council adopt the:

1. monthly financial statements for the period ending 30 September 2016 and
2. summary of reconciliations for the period ending 30 September 2016

COUNCIL RESOLUTION	81/16	Moved Cr Hoek
--------------------	-------	---------------

Seconded	Cr Manez	Carried	5/0
----------	----------	---------	-----

SHIRE OF BODDINGTON

Financial Reports for the period ended

30-Sep-16

<b>Report Type</b>	<b>Page No.</b>
Summary of Financial Activity	1
Comprehensive Income Statement by Nature/type	2
Comprehensive Income Statement by Programme	3
Rate Setting Statement	4
Statement of Financial Position	5
Loan Repayments & Net Current Asset Position	6
Capital Expenditure by Asset type	7
Existing Buildings Capital Expenditure by Jobs	8
Financial Graphs	9

**SHIRE OF BODDINGTON**  
**SUMMARY OF FINANCIAL ACTIVITY by Nature or Type**  
For the period ended

30-Sep-16

	2016/17 Budget			Actual YTD	Variance YTD	% Variance YTD
	Approved	Current	YTD			
<b>Opening Funding Surplus (Deficit)</b>	-	-	-	166,976	166,976	
<b>Revenue</b>						
Rates	4,106,113	4,106,113	4,106,113	4,085,132	20,981	-0.5%
Operating Grants, Subsidies and Contributions	736,081	736,081	354,717	231,338	123,379	-34.8%
Fees and Charges	1,050,142	1,050,142	416,376	391,303	25,073	-6.0%
Interest Earnings	131,797	131,797	32,946	31,511	1,435	-4.4%
Other Revenue	173,487	173,487	30,666	49,741	19,075	62.2%
Profit from Asset Sales	-	-	-	-	-	
<b>OPERATING INCOME</b>	<b>6,197,620</b>	<b>6,197,620</b>	<b>4,940,818</b>	<b>4,789,025</b>	<b>151,793</b>	<b>-3.1%</b>
<b>Expenses</b>						
Employee Costs	- 2,518,897	- 2,518,897	- 598,085	- 557,141	40,944	6.8%
Materials and Contracts	- 1,532,337	- 1,532,337	- 382,222	- 398,105	15,883	-4.2%
Utility Charges	- 313,669	- 313,669	- 68,748	- 81,172	12,424	-18.1%
Depreciation on Non-Current Assets	- 1,378,259	- 1,378,259	- 344,553	- 390,823	46,270	-13.4%
Interest Expenses	- 121,119	- 121,119	- 34,579	- 35,083	504	-1.5%
Insurance Expenses	- 208,943	- 208,943	- 101,397	- 116,789	15,392	-15.2%
Loss on Asset Sales	-	-	-	-	-	
Other Expenditure	- 150,315	- 150,315	- 36,276	- 38,814	2,538	-7.0%
<b>OPERATING EXPENDITURE</b>	<b>- 6,223,539</b>	<b>- 6,223,539</b>	<b>- 1,565,860</b>	<b>- 1,617,928</b>	<b>52,068</b>	<b>-3.3%</b>
<b>Net Result (incl. c/f surplus position)</b>	<b>- 25,919</b>	<b>- 25,919</b>	<b>3,374,958</b>	<b>3,338,073</b>	<b>36,885</b>	<b>-1.1%</b>
<b>Adjustments for Non-Cash Items</b>						
Depreciation	1,378,259	1,378,259	344,553	390,823	46,270	13.4%
Loss on Asset Disposals	-	-	-	-	-	
(Profit) on Asset Disposals	-	-	-	-	-	
Provisions and Accruals	-	-	-	-	-	
	<b>1,378,259</b>	<b>1,378,259</b>	<b>344,553</b>	<b>390,823</b>	<b>46,270</b>	<b>13.4%</b>
<b>Net Result before funding and Capex items</b>	<b>1,352,340</b>	<b>1,352,340</b>	<b>3,719,511</b>	<b>3,728,896</b>	<b>9,385</b>	<b>0.3%</b>
<b>Capital Income and Expenditure</b>						
Non-operating Grants & contributions	762,767	762,767	151,395	573,700	422,305	-278.9%
Purchase Land & Buildings	- 404,641	- 404,641	- 26,166	- 1,355,957	1,329,791	-5082.1%
Purchase Plant & Equipment	- 322,344	- 322,344	- 255,949	- 40,430	215,519	84.2%
Purchase Roads, Streets & Bridges	- 1,029,551	- 1,029,551	- 111,626	-	111,626	100.0%
Purchase Other Infrastructure	- 156,569	- 156,569	- 39,141	- 10,328	28,813	73.6%
Proceeds from Asset Sales	384,000	384,000	-	-	-	
<b>Net Capital Items</b>	<b>- 766,338</b>	<b>- 766,338</b>	<b>- 281,487</b>	<b>- 833,015</b>	<b>551,528</b>	<b>-195.9%</b>
<b>Funding Items</b>						
Proceeds from New loans	-	-	-	-	-	
Repayment of Loan Principal	- 301,130	- 301,130	- 25,094.17	- 72,638	47,544	
Self Supporting Loan Principal Income	-	-	-	-	-	
<b>Total Funding Items</b>	<b>- 301,130</b>	<b>- 301,130</b>	<b>- 25,094</b>	<b>- 72,638</b>	<b>47,544</b>	
<b>Reserve Items</b>						
Transfers to Reserves	- 56,109	- 56,109	-	-	-	
Transfers from Reserves	-	-	-	-	-	
<b>Net Reserve movement</b>	<b>- 56,109</b>	<b>- 56,109</b>	<b>-</b>	<b>-</b>	<b>-</b>	
<b>Closing Funding Surplus (Deficit)</b>	<b>228,763</b>	<b>228,763</b>	<b>3,412,930</b>	<b>2,823,243</b>	<b>589,686</b>	<b>-17.3%</b>

**SHIRE OF BODDINGTON**  
**STATEMENT OF COMPREHENSIVE INCOME BY NATURE/TYPE**  
For the period ended

30-Sep-16

	2016/17 Budget		YTD	Actual YTD	Variance YTD	% Variance YTD
	Approved	Current				
<b>Revenue</b>						
Rates	4,106,113	4,106,113	4,106,113	4,085,132	- 20,981	-0.5%
Operating Grants, Subsidies and Contributions	736,081	736,081	354,717	231,338	- 123,379	-34.8%
Fees and Charges	1,050,142	1,050,142	416,376	391,303	- 25,073	-6.0%
Interest Earnings	131,797	131,797	32,946	31,511	- 1,435	-4.4%
Other Revenue	173,487	173,487	30,666	49,741	19,075	62.2%
<b>OPERATING INCOME</b>	<b>6,197,620</b>	<b>6,197,620</b>	<b>4,940,818</b>	<b>4,789,025</b>	<b>- 151,793</b>	<b>-3.1%</b>
<b>Expenses</b>						
Employee Costs	- 2,518,897	- 2,518,897	- 598,085	- 557,141	40,944	6.8%
Materials and Contracts	- 1,532,337	- 1,532,337	- 382,222	- 398,105	15,883	-4.2%
Utility Charges	- 313,669	- 313,669	- 68,748	- 81,172	12,424	-18.1%
Depreciation on Non-Current Assets	- 1,378,259	- 1,378,259	- 344,553	- 390,823	46,270	-13.4%
Interest Expenses	- 121,119	- 121,119	- 34,579	- 35,083	504	-1.5%
Insurance Expenses	- 208,943	- 208,943	- 101,397	- 116,789	15,392	-15.2%
Other Expenditure	- 150,315	- 150,315	- 36,276	- 38,814	2,538	-7.0%
<b>OPERATING EXPENDITURE</b>	<b>- 6,223,539</b>	<b>- 6,223,539</b>	<b>- 1,565,860</b>	<b>- 1,617,928</b>	<b>52,068</b>	<b>-3.3%</b>
Net Result before Capital Income	- 25,919	- 25,919	3,374,958	3,171,097	- 203,861	-6.0%
Non-Op. Grants, Subsidies and Contributions	762,767	762,767	151,395	573,700	422,305	278.9%
Profit on Asset Disposals	-	-	-	-	-	-
Loss on Asset Disposals	-	-	-	-	-	-
<b>OTHER</b>	<b>762,767</b>	<b>762,767</b>	<b>151,395</b>	<b>573,700</b>	<b>422,305</b>	<b>278.9%</b>
<b>NET RESULT</b>	<b>736,848</b>	<b>736,848</b>	<b>3,526,353</b>	<b>3,744,797</b>	<b>218,444</b>	<b>6.2%</b>
<b>Other Comprehensive Income</b>						
Changes on Revaluation of Non-Current Assets	- 64,500	- 64,500	-	-	-	-
<b>Total Other Comprehensive Income</b>	<b>- 64,500</b>	<b>- 64,500</b>	<b>-</b>	<b>-</b>	<b>-</b>	<b>-</b>
<b>TOTAL COMPREHENSIVE INCOME</b>	<b>672,348</b>	<b>672,348</b>	<b>3,526,353</b>	<b>3,744,797</b>	<b>218,444</b>	<b>6.2%</b>

Attachment 8.2.1 A

SHIRE OF BODDINGTON  
STATEMENT OF COMPREHENSIVE INCOME BY PROGRAM  
For the period ended

30-Sep-16

	2016/17 Budget		YTD	Actual YTD	Variance YTD	% Variance YTD
	Approved	Current				
<b>Revenue</b>						
Governance	4,554,904	4,554,904	4,218,304	4,210,740	- 7,564	-0.2%
General Purpose Funding	71,905	71,905	15,018	33,037	18,019	120.0%
Law, Order, Public Safety	291,921	291,921	162,292	71,162	- 91,130	-56.2%
Health	29,770	29,770	7,437	4,794	- 2,643	-35.5%
Education and Welfare	410,949	410,949	99,930	77,557	- 22,373	-22.4%
Housing	20,073	20,073	5,013	9,928	4,915	98.0%
Community Amenities	286,608	286,608	234,853	235,825	972	0.4%
Recreation and Culture	79,548	79,548	9,442	15,593	6,151	65.1%
Transport	103,961	103,961	103,728	68,100	- 35,628	-34.3%
Economic Services	268,758	268,758	64,998	49,920	- 15,078	-23.2%
Other Property and Services	79,225	79,225	19,803	12,368	- 7,435	-37.5%
	<b>6,197,620</b>	<b>6,197,620</b>	<b>4,940,818</b>	<b>4,789,025</b>	<b>- 151,793</b>	<b>-3.1%</b>
<b>Expenses excluding Finance Costs</b>						
Governance	40,376	40,376	4,942	937	5,879	119.0%
General Purpose Funding	- 2,638	- 2,638	657	12,103	11,446	-1742.1%
Law, Order, Public Safety	- 515,359	- 515,359	128,326	139,138	10,812	-8.4%
Health	- 232,341	- 232,341	57,809	69,353	11,544	-20.0%
Education and Welfare	- 625,589	- 625,589	151,851	129,510	22,341	14.7%
Housing	35,387.67	35,387.67	8,831.19	4,200.01	- 4,631	52.4%
Community Amenities	- 688,702	- 688,702	170,419	180,634	10,215	-6.0%
Recreation and Culture	- 1,190,077	- 1,190,077	293,067	305,278	12,211	-4.2%
Transport	- 2,520,350.40	- 2,520,350.40	623,757.52	686,550.04	62,793	-10.1%
Economic Services	- 425,782	- 425,782	102,523	142,926	40,403	-39.4%
Other Property and Services	22,656	22,656	6,761	77,510	84,271	1246.4%
	<b>- 6,102,420</b>	<b>- 6,102,420</b>	<b>- 1,531,281</b>	<b>- 1,582,845</b>	<b>- 51,564</b>	<b>-3.4%</b>
<b>Finance Costs</b>						
Governance	- 40,510	- 40,510	10,125	3,597	6,528	64.5%
General Purpose Funding	-	-	-	-	-	-
Law, Order, Public Safety	-	-	-	-	-	-
Health	-	-	-	-	-	-
Education and Welfare	- 11,067	- 11,067	5,533	6,235	702	-12.7%
Housing	- 35,389	- 35,389	2,107	4,200	2,093	-99.3%
Community Amenities	-	-	-	-	-	-
Recreation and Culture	- 33,106	- 33,106	16,552	20,406	3,854	-23.3%
Transport	- 1,048	- 1,048	262	644	382	-145.9%
Economic Services	-	-	-	-	-	-
Other Property and Services	-	-	-	-	-	-
	<b>- 121,119</b>	<b>- 121,119</b>	<b>34,579</b>	<b>35,083</b>	<b>504</b>	<b>-1.5%</b>
Net Result before Capital Income	- 25,919	- 25,919	3,374,958	3,171,097	- 202,853	
<b>Non Operating Grants, Subsidies and Contributions</b>						
Law, Order, Public Safety	-	-	-	-	-	-
Education and Welfare	-	-	-	300,000	300,000	#DIV/0!
Recreation and Culture	30,000	30,000	-	152,500	152,500	
Transport	732,767	732,767	151,395	121,200	- 30,195	-19.9%
Economic Services	-	-	-	-	-	#DIV/0!
Other Property and Services	-	-	-	-	-	-
	<b>762,767</b>	<b>762,767</b>	<b>151,395</b>	<b>573,700</b>	<b>422,305</b>	<b>278.9%</b>
<b>Other Comprehensive Income</b>						
Changes on Revaluation of Non-Current Assets	64,500	64,500	-	-	-	-
<b>TOTAL COMPREHENSIVE INCOME</b>	<b>672,348</b>	<b>672,348</b>	<b>3,526,353</b>	<b>3,744,797</b>	<b>218,444</b>	<b>6.2%</b>

SHIRE OF BODDINGTON RATE SETTING STATEMENT For the period ended							30-Sep-16
	2016/17 Budget			Actual	Variance	% Variance	
	Approved	Current	YTD	YTD	YTD	YTD	
<b>Revenue</b>							
Operating Grants, Subsidies and Contributions	736,081	736,081	354,717	231,338 -	123,379	-34.8%	
Fees and Charges	1,050,142	1,050,142	416,376	391,303 -	25,073	-6.0%	
Interest Earnings	131,797	131,797	32,946	31,511 -	1,435	-4.4%	
Other Revenue	173,487	173,487	30,666	49,741	19,075	62.2%	
Profit from Asset Sales	-	-	-	-	-	-	
<b>Total Operating Revenue excluding Rates</b>	<b>2,091,507</b>	<b>2,091,507</b>	<b>834,705</b>	<b>703,894 -</b>	<b>130,812</b>	<b>-15.7%</b>	
<b>Expenses</b>							
Employee Costs	- 2,518,897 -	- 2,518,897 -	- 598,085 -	- 557,141	- 40,944	- 6.8%	
Materials and Contracts	- 1,532,337 -	- 1,532,337 -	- 382,222 -	- 398,105 -	- 15,883	- 4.2%	
Utility Charges	- 313,669 -	- 313,669 -	- 68,748 -	- 81,172 -	- 12,424	- 18.1%	
Depreciation on Non-Current Assets	- 1,378,259 -	- 1,378,259 -	- 344,553 -	- 390,823 -	- 46,270	- 13.4%	
Interest Expenses	- 121,119 -	- 121,119 -	- 34,579 -	- 35,083 -	- 504	- 1.5%	
Insurance Expenses	- 208,943 -	- 208,943 -	- 101,397 -	- 116,789 -	- 15,392	- 15.2%	
Loss on Asset Sales	-	-	-	-	-	-	
Other Expenditure	- 150,315 -	- 150,315 -	- 36,276 -	- 38,814 -	- 2,538	- 7.0%	
<b>Operating Expenditure</b>	<b>- 6,223,539 -</b>	<b>- 6,223,539 -</b>	<b>- 1,565,860 -</b>	<b>- 1,617,928 -</b>	<b>- 52,068</b>	<b>- 3.3%</b>	
<b>Operating Result Excluding Rates Income</b>	<b>- 4,132,032 -</b>	<b>- 4,132,032 -</b>	<b>- 731,155 -</b>	<b>- 914,034 -</b>	<b>- 182,880</b>	<b>- 25%</b>	
<b>Adjustments for Non-Cash Items</b>							
Depreciation	1,378,259	1,378,259	344,553	390,823	46,270	-13.4%	
(Profit)/Loss on Asset Disposals	-	-	-	-	-	-	
Provisions & Accruals	-	-	-	-	-	-	
	<b>1,378,259</b>	<b>1,378,259</b>	<b>344,553</b>	<b>390,823</b>	<b>46,270</b>	<b>-13.4%</b>	
<b>Capital Income and Expenditure</b>							
Purchase of Capital Expenditure	- 1,913,105 -	- 1,913,105 -	- 432,882 -	- 1,406,715 -	- 973,833	- 225.0%	
Non-operating Grants & contributions	762,767	762,767	151,395	573,700	422,305	-278.9%	
Proceeds from Asset Sales	384,000	384,000	-	-	-	-	
	<b>- 766,338 -</b>	<b>- 766,338 -</b>	<b>- 281,487 -</b>	<b>- 833,015 -</b>	<b>- 551,528</b>	<b>- 195.9%</b>	
<b>Funding &amp; Reserve Items</b>							
Proceeds from New loans	-	-	-	-	-	-	
Repayment of Loan Principal	- 301,130 -	- 301,130 -	- 25,094 -	- 72,639 -	- 47,545	- 189.5%	
Self Supporting Loan Principal Income	-	-	-	-	-	-	
Transfers to Reserves	- 56,109 -	- 56,109 -	-	-	-	-	
Transfers from Reserves	-	-	-	-	-	-	
	<b>- 357,239 -</b>	<b>- 357,239 -</b>	<b>- 25,094 -</b>	<b>- 72,639 -</b>	<b>- 47,545</b>	<b>- 189.5%</b>	
Estimated Surplus/(Deficit) July 1 B/Fd.	-	-	-	166,976 -	166,976	-	
Estimated Surplus/(Deficit) June 30 C/Fd.	228,312	228,312	3,412,930	2,823,243	589,686	-	
<b>Amount required from General Rate</b>	<b>- 4,105,662 -</b>	<b>- 4,105,662 -</b>	<b>- 4,106,113 -</b>	<b>- 4,085,132 -</b>	<b>- 20,981</b>	<b>0.5%</b>	

<b>SHIRE OF BODDINGTON</b>		
<b>STATEMENT OF FINANCIAL POSITION</b>		
For the period ended		
	30-Jun-16	30-Sep-16
	<b>Prior Year</b>	<b>YTD Actual</b>
<b>CURRENT ASSETS</b>		
Cash and Cash Equivalents	7,423,388	9,310,106
Equity Reserve Investments	-	-
Trade & Other Receivables	309,629	926,530
Inventories	2,044	2,044
<b>TOTAL CURRENT ASSETS</b>	<b>7,735,061</b>	<b>10,238,680</b>
<b>NON CURRENT ASSETS</b>		
Property Plant & Equipment	21,291,196	22,576,149
Land Held for Resale	272,539	272,539
Infrastructure	46,191,095	45,922,034
<b>TOTAL NON CURRENT ASSETS</b>	<b>67,754,830</b>	<b>68,770,721</b>
<b>TOTAL ASSETS</b>	<b>75,489,891</b>	<b>79,009,402</b>
<b>CURRENT LIABILITIES</b>		
Trade & Other Payables	259,841	94,126
Employee Provisions	314,224	314,224
Borrowings	301,130	228,493
Trusts	193,867	206,934
<b>TOTAL CURRENT LIABILITIES</b>	<b>1,069,062</b>	<b>843,777</b>
<b>NON CURRENT LIABILITIES</b>		
Trade & Other Payables - Specific	300,000	300,000
Borrowings	2,505,439	2,505,439
Employee Provisions	62,352	62,352
<b>TOTAL NON CURRENT LIABILITIES</b>	<b>2,867,791</b>	<b>2,867,790</b>
<b>TOTAL LIABILITIES</b>	<b>3,936,853</b>	<b>3,711,567</b>
<b>EQUITY</b>		
Retained Earnings	24,466,178	28,210,975
Reserves Cash Backed	6,800,153	6,800,153
Revaluation Reserve	40,286,707	40,286,707
<b>TOTAL EQUITY</b>	<b>71,553,038</b>	<b>75,297,835</b>
<b>TOTAL LIABILITIES &amp; EQUITY</b>	<b>75,489,891</b>	<b>79,009,402</b>
<b>BALANCE SHEET VARIANCE</b>	<b>\$0.00</b>	<b>\$0.00</b>

LOAN PRINCIPAL REPAYMENTS							
COA	Description	IE Summary	Inc/Exp Analysis Summary	Original Budget	Current Budget	YTD Budget	YTD Actual
3042460	PRINCIPAL ON LOAN 105	71	Other Expenses	\$112,455.50	\$112,455.50	\$0.00	\$0.00
2113200	LOAN 106 - REC CENTRE	71	Other Expenses	\$0.00	\$0.00	\$0.00	\$0.00
3074200	PRINCIPAL LOAN 83	71	Other Expenses	\$9,367.50	\$9,367.50	\$0.00	\$4,608.20
3083000	PRINCIPAL ON LOAN 100	71	Other Expenses	\$12,997.00	\$12,997.00	\$0.00	\$6,395.84
3091402	PRINCIPAL ON LOAN 91	71	Other Expenses	\$0.00	\$0.00	\$0.00	\$0.00
3091460	PRINCIPAL ON LOAN 94	71	Other Expenses	\$11,107.00	\$11,107.00	\$0.00	\$0.00
3091470	PRINCIPAL ON LOAN 97	71	Other Expenses	\$11,264.00	\$11,264.00	\$0.00	\$0.00
3113046	PRINCIPAL - LOAN 103	71	Other Expenses	\$51,216.00	\$51,216.00	\$0.00	\$25,326.79
3113048	PRINCIPAL - LOAN 106 REC CENTRE	71	Other Expenses	\$54,025.00	\$54,025.00	\$0.00	\$26,787.27
3121100	PRINCIPAL LOAN 102	71	Other Expenses	\$38,698.00	\$38,698.00	\$0.00	\$9,519.62
<b>TOTAL</b>				<b>\$301,130.00</b>	<b>\$301,130.00</b>	<b>\$0.00</b>	<b>\$72,637.72</b>

NET CURRENT ASSET POSITION - RECONCILIATION				
	2016/17 Budget		Actual	
	Approved	Current	YTD	YTD
NCA Items from Statement of Financial Activity	3,156,683	3,156,683	-	2,503,707
Current Assets				
Less: Current Liabilities	-	819,828	-	152,561
<b>Net Current Assets</b>	<b>2,336,855</b>	<b>2,336,855</b>	<b>-</b>	<b>2,656,267</b>
<b>REPRESENTED BY - (From Financial Position) Movement</b>				
<b>Net Current Assets</b>				<b>2,656,267</b>
<b>REPRESENTED BY - (From Rate Setting Statement) Movement</b>				
Opening Surplus Position				166,976
Closing Surplus Position				2,823,243
<b>Net Current Assets</b>				<b>2,656,267</b>



SHIRE OF BODDINGTON  
 Printed : at 10:00 AM on 5/10/2016

SHIRE OF BODDINGTON  
 CAPITAL EXPENDITURE BY ASSET CLASS  
 For the period ended

COA	Description	Asset Type	Original Budget	Current Budget	YTD Budget	YTD Actual
			104,641	104,641	26,166	30-Sep-16
3042202	EXISTING BUILDINGS 16/17	Land & Buildings	-	-	-	-
3082090	AGED CARE COMPLEX	Land & Buildings	-	-	-	4,350
3113200	RECREATION CENTRE	Land & Buildings	-	-	-	1,326,766
3135202	LAND PURCHASE	Land & Buildings	300,000	300,000	-	-
3132008	VISITOR CENTRE	Land & Buildings	-	-	-	24,841
		<b>Land &amp; Buildings Total</b>	<b>404,641</b>	<b>404,641</b>	<b>26,166</b>	<b>1,355,957</b>
3102201	NEW REFUSE SITE	Other Infrastructure	31,000	31,000	7,749	9,871
3105050	OVALS PARKS & CEMETERIES	Other Infrastructure	83,713	83,713	20,928	457
3053025	INFRASTRUCTURE OTHER	Other Infrastructure	41,856	41,856	10,464	-
		<b>Other Infrastructure Total</b>	<b>156,569</b>	<b>156,569</b>	<b>39,141</b>	<b>10,328</b>
3042209	COMPUTER EQUIPMENT	Plant & Equip	62,785	62,785	62,785	40,430
3042208	OFFICE EQUIPMENT	Plant & Equip	20,928	20,928	20,928	-
3123466	PNEUMATIC TYRED ROLLER	Plant & Equip	162,237	162,237	162,237	-
3127025	WATER TANKS - PLANT & EQUIPMENT	Plant & Equip	7,773	7,773	-	-
3121066	TORO RIDE ON MOWER	Plant & Equip	28,621	28,621	-	-
3139302	MINOR CAPITAL ITEMS	Plant & Equip	40,000	40,000	9,999	-
		<b>Plant &amp; Equip Total</b>	<b>322,344</b>	<b>322,344</b>	<b>255,949</b>	<b>40,430</b>
3121086	Main Roads Bridge Program	Roads Infrastructure	42,500	42,500	-	-
3121090	ROADS TO RECOVERY	Roads Infrastructure	302,582	302,582	75,645	-
3121705	MAIN STREET UPGRADE	Roads Infrastructure	132,563	132,563	22,094	-
3121700	COMMODITY GRANT CAPITAL EXPENSE	Roads Infrastructure	55,550	55,550	13,887	-
3121800	ROAD CONST. - RRG	Roads Infrastructure	454,500	454,500	-	-
3121803	FOOTPATHS	Roads Infrastructure	41,856	41,856	-	-
		<b>Roads Infrastructure Total</b>	<b>1,029,551</b>	<b>1,029,551</b>	<b>111,626</b>	-
		<b>Grand Total</b>	<b>1,913,105</b>	<b>1,913,105</b>	<b>432,882</b>	<b>1,406,715</b>

## CAPITAL EXPENDITURE - EXISTING BUILDINGS - By JOBS

30-Sep-16

Job	Description	Original Budget	Current Budget	YTD Budget	YTD Actual
BAC1999	Bannister Road Shire Office - Capital	2,100	2,100	525	-
BCC1028	Pollard Street Child Care Centre - Capital	8,700	8,700	2,175	-
BCC1029	Johnstone Street Community Newspaper - Capital	4,650	4,650	1,164	-
BCC2999	Bannister Road - Caravan Park Caretaker Residence - Capital	3,900	3,900	975	-
BDC1015	Farmer Ave - Depot Lunch Room - Capital	600	600	150	-
BFC1039	Wurraming Ave - Foreshore Toilet Block - Capital	2,100	2,100	525	-
BIC1024	Hotham Street Ic Unit 1 - Capital	1,331	1,331	333	-
BIC2024	Hotham Street Ic Unit 2 - Capital	1,331	1,331	333	-
BIC3024	Hotham Street Ic Unit 3 - Capital	1,331	1,331	333	-
BIC4024	Hotham Street Ic Unit 4 - Capital	1,332	1,332	333	-
BMC1024	Hotham Street Medical Centre - Capital	1,500	1,500	375	-
BOC1025	Forrest Street Old School - Main Classroom - Capital	1,500	1,500	375	-
BOC4025	Forrest Street Old School Toilets - Capital	16,000	16,000	3,999	-
BPC1999	Bannister Road Public Toilets - Capital	900	900	225	-
BRC1025	Forrest Street Retirement Unit 1 - Capital	225	225	57	-
BRC2025	Forrest Street Retirement Unit 2 - Capital	225	225	57	-
BRC3025	Forrest Street Retirement Unit 3 - Capital	225	225	57	-
BRC4025	Forrest Street Retirement Unit 4 - Capital	225	225	57	-
BSC1027	27 Hill Street (Staff Housing) - Capital	1,370	1,370	342	-
BSC1028	Pollard Street Swimming Pool Ablutions - Capital	900	900	225	-
BSC1029	Johnstone Street 25 (Staff Housing) - Capital	12,990	12,990	3,249	-
BSC1045	Pecan Place 3 (Staff Housing) - Capital	900	900	225	-
BSC1050	Prussian Way 20 (Staff Housing) - Capital	4,300	4,300	1,074	-
BSC1054	Blue Gum Close 16 (Staff Housing) - Capital	3,900	3,900	975	-
BSC1063	Club Drive Sporting Complex - Capital	1,500	1,500	375	-
BSC2029	Johnstone Street 46 (Staff Housing) - Capital	900	900	225	-
BSC2054	Blue Gum Close 16 (Staff Housing) - Capital	7,300	7,300	1,824	-
BSC3028	Pollard Street Swimming Pool Kiosk/Pump Room - Capital	4,675	4,675	1,170	-
BTC1029	Johnstone Street Town Hall - Capital	16,200	16,200	4,050	-
BWC1013	Robins Road Waste Site Office - Capital	600	600	150	-
BYC1999	Bannister Road Youth Centre - Capital	931	931	234	-
<b>TOTAL EXISTING BUILDINGS</b>		<b>\$104,641.00</b>	<b>\$104,641.00</b>	<b>\$26,166.00</b>	<b>\$0.00</b>

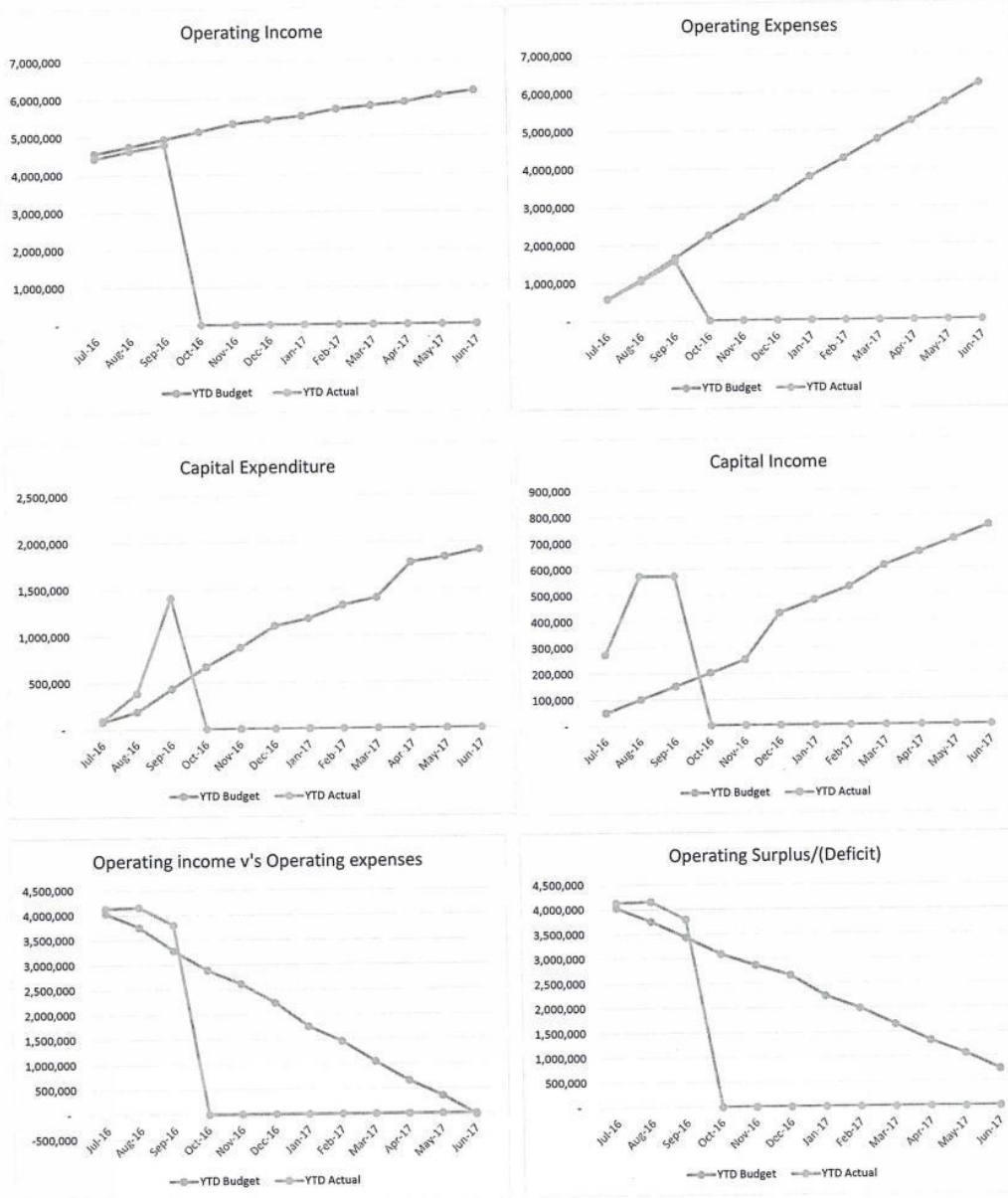
## REPRESENTED BY:

COA

<b>3042022 EXISTING BUILDINGS 16/17</b>	<b>104,641</b>	<b>104,641</b>	<b>26,166</b>	<b>-</b>
---	----------------	----------------	---------------	----------

SHIRE OF BODDINGTON  
 GRAPHICAL DISCLOSURE OF FINANCIAL PERFORMANCE  
 For the period ended

30-Sep-16



S/10/2016:\Corporate Services\Manager Finance\Financial Reports\Council\2016-17\03 September 2016\Data for Grap

## 8.2.2 List of Payments September 2016

Disclosure of Interest:	Nil
Date:	10 October 2016
Author:	J Rendell
Attachments:	8.2.2A List of Payments September 2016

### Summary

The Local Government (Financial Management) Regulations 1996 require the preparation of a List of Payments made from the Council's bank accounts.

### Background

A list of the payments made in each month is to be prepared and presented to a meeting of Council in the following month.

This list of payments is to be reviewed by Council separately from the monthly financial statements. This will ensure that the requirement of the Financial Regulations for the list of payments made in one month to be presented to the Council meeting in the following month, will be met even if the financial statements are not presented to that meeting.

Councillors have the opportunity to query or inspect invoices before the meeting to satisfy themselves before the item comes before Council.

### Comment

The List of Payments for the month of September is presented in Attachment 8.2.2A.

### Strategic Implications - Nil

### Statutory Environment

Local Government (Financial Management) Regulations 1996

13. Payments from municipal fund or trust fund by CEO, CEO's duties as to etc.

- (1) If the local government has delegated to the CEO the exercise of its power to make payments from the municipal fund or the trust fund, a list of accounts paid by the CEO is to be prepared each month showing for each account paid since the last such list was prepared —
  - (a) the payee's name; and
  - (b) the amount of the payment; and
  - (c) the date of the payment; and
  - (d) sufficient information to identify the transaction.
- (2) A list of accounts for approval to be paid is to be prepared each month showing —
  - (a) for each account which requires council authorisation in that month —
    - (i) the payee's name; and
    - (ii) the amount of the payment; and
    - (iii) sufficient information to identify the transaction; and
  - (b) the date of the meeting of the council to which the list is to be presented.

- (3) A list prepared under subregulation (1) or (2) is to be —
- (a) presented to the council at the next ordinary meeting of the council after the list is prepared; and
  - (b) recorded in the minutes of that meeting.

Policy Implications – Nil

Financial Implications - Nil

Economic Implications - Nil

Social Implications - Nil

Environmental Considerations - Nil

Consultation - Nil

OFFICER'S RECOMMENDATION – 8.2.2
----------------------------------

That Council adopts the list of payments for the period ending 30 September 2016; at Attachment 8.2.2A.

COUNCIL RESOLUTION	82/16	Moved Cr Glynn
Seconded	Cr Crilly	Carried 5/0

## Attachment 8.2.2A

LIST OF PAYMENTS SEPTEMBER 2016				
CHQ/EFT	DATE	NAME	DESCRIPTION	AMOUNT
1131	12-09-2016	BUILDING & CONSTRUCTION INDUSTRY TRAINING FUND	BCITF LEVY AUGUST 2016	223.20
1132	12-09-2016	SHIRE OF BODDINGTON	BCITF LEVY AUGUST 2016	44.75
1133	12-09-2016	BUILDERS REGISTRATION BOARD OF WA	BRB LEVY AUGUST 2016	358.10
1134	29-09-2016	HAYLEY THORNE	REFUND CLEANING & KEY BOND FOR TOWN HALL HIRE	220.00
EFT16524	07-09-2016	GREGORY JOHN WATSON	REFUND BOND ON FOX TRAP.	110.00
EFT16559	27-09-2016	BODDINGTON SOCCER CLUB	REFUND CLEANING & KEY BOND.	220.00
			<b>TOTAL TRUST</b>	<b>1,176.05</b>
EFT16501	02-09-2016	COATES HIRE	PLANT HIRE	215.34
EFT16502	02-09-2016	CROSSMAN HOT WATER & PLUMBING	PLUMBING REPAIRS - OLD SCHOOL	2,902.90
EFT16503	02-09-2016	CATHERINE FRANCES WILLIAMS	STAFF REIMBURSEMENT	256.65
EFT16504	02-09-2016	ABCO PRODUCTS PTY LTD	COMMERCIAL CLEANING SUPPLIES	278.26
EFT16505	02-09-2016	EDGE PLANNING & PROPERTY	TOWN PLANNING SERVICES	1,391.50
EFT16506	02-09-2016	PEEL CHAMBER OF COMMERCE & INDUSTRY	CORPORATE MEMBERSHIP	1,024.50
EFT16507	02-09-2016	COURIER AUSTRALIA TOLL IPEC	COURIER CHARGES	19.03
EFT16508	02-09-2016	WATERMAN IRRIGATION AUSTRALIA	PARTS - STANDPIPE	141.35
EFT16509	02-09-2016	CECIL GRANT BARTLE	STAFF REIMBURSEMENT	282.10
EFT16510	02-09-2016	GOLDEN GLASS	WINDOW REGLAZE - PAVILLION	231.00
EFT16511	02-09-2016	SIMON'S MARKET CAFE	VARIOUS GROCERIES - ELC	94.99
EFT16512	02-09-2016	BEN PIKE CARPENTRY	GATE - OLD SCHOOL	1,359.60
EFT16513	02-09-2016	CHRIS LITTLEMORE	STAFF REIMBURSEMENT	200.00
EFT16514	02-09-2016	SNALLOW PTY LTD - T/A WALLIS COMPUTER SOLUTIONS	COMPUTER EQUIPMENT	13,578.84
EFT16515	02-09-2016	CLARKEYS CARPENTRY	WHIRLY BIRD - DOG POUND	352.00
EFT16516	02-09-2016	MICHAEL PAGE INTERNATIONAL	TEMP FINANCE MANAGER	6,247.19

LIST OF PAYMENTS SEPTEMBER 2016				
CHQ/EFT	DATE	NAME	DESCRIPTION	AMOUNT
EFT16517	02-09-2016	DMC CLEANING CORPORATION PTY LTD	CLEANING SERVICES	12,135.38
EFT16518	02-09-2016	MOORE CONSTRUCTIONS (WA) PTY LTD	PROGRESS CLAIM - NEW REC CENTRE	426,309.24
EFT16519	02-09-2016	CORPORATE TRAINING SPECIALISTS	HR COURSE - D. TAYLOR	325.00
EFT16520	02-09-2016	TERRIFIC TRADING	PLAN REVIEW - VISITOR CENTRE	660.00
EFT16521	02-09-2016	AVON WASTE	RUBBISH BIN COLLECTION SERVICE	5,599.01
EFT16522	02-09-2016	AUSTRALIAN TAXATION OFFICE	BAS AUG 2016	12,283.00
EFT16523	02-09-2016	BODDINGTON SES	SES REIMBURSEMENT	2,839.64
EFT16524	07-09-2016		REFER TRUST	
EFT16525	09-09-2016	BODDINGTON HARDWARE AND NEWSAGENCY	MONTHLY HARDWARE ACCOUNT	3,170.49
EFT16526	14-09-2016	AUSTRALIA POST ACCOUNTS RECEIVABLE	MONTHLY POSTAGE CHARGES ON ACCOUNT	931.03
EFT16527	14-09-2016	OFFICEWORKS BUSINESS DIRECT	STATIONERY & SUPPLIES - ELC & ADMIN	788.85
EFT16528	14-09-2016	CROSSMAN HOT WATER & PLUMBING	RPZ TESTING - STANDPIPES	990.00
EFT16529	14-09-2016	ALLAN PETER ROBINSON	FREIGHT CHARGES	374.00
EFT16530	14-09-2016	WESTERN AUSTRALIAN LAND INFORMATION AUTHORITY (LANDGATE)	GRV INTERIM VALUATIONS	137.60
EFT16531	14-09-2016	AUS RECORDS	ARCHIVE BOXES - RECORDS	132.00
EFT16532	14-09-2016	EDGE PLANNING & PROPERTY	TOWN PLANNING SERVICES FEE	3,383.87
EFT16533	14-09-2016	SPENCER SIGNS	BILLBOARD BANNERS - IRSA	2,420.00
EFT16534	14-09-2016	BODDINGTON IGA - SHIRE ADMIN ACCOUNT	MONTHLY ACCOUNT - SHIRE	446.77
EFT16535	14-09-2016	BAILEYS FERTILISERS	311 GRANULATED FERTILISER - TOWN OVAL	192.50
EFT16536	14-09-2016	COURIER AUSTRALIA TOLL IPEC	COURIER CHARGES	10.30
EFT16537	14-09-2016	JOHN CHAPMAN	REPAIR VAST SET TOP BOX - MEDICAL CENTRE	150.00
EFT16538	14-09-2016	ARCHIVEWISE (TOTALLY CONFIDENTIAL RECORDS MANAGEMENT)	MONTHLY ARCHIVE STORAGE FEES	147.82
EFT16539	14-09-2016	BODDINGTON IGA - ELC ACCOUNT	MONTHLY ACCOUNT - ELC	252.06

## Attachment 8.2.2A

LIST OF PAYMENTS SEPTEMBER 2016				
CHQ/EFT	DATE	NAME	DESCRIPTION	AMOUNT
EFT16540	14-09-2016	MODERN TEACHING AIDS PTY LTD	SUPPLIES - ELC	890.71
EFT16541	14-09-2016	BODDINGTON MINI SKIPS	STREET BIN RUBBISH COLLECTION SERVICE	2,460.08
EFT16542	14-09-2016	WATERLOGIC AUSTRALIA PTY LTD	WATER UNITS RENTAL	352.00
EFT16543	14-09-2016	SNALLOW PTY LTD - T/A WALLIS COMPUTER SOLUTIONS	NEW SERVER & EQUIPMENT - SHIRE ADMIN	34,858.12
EFT16544	14-09-2016	MICHAEL PAGE INTERNATIONAL	TEMP FINANCE MANAGER	3,344.22
EFT16545	14-09-2016	CREATIVE SPACES	40% PROGRESS PAYMENT - VISITOR CENTRE	9,680.00
EFT16546	14-09-2016	CONTRACT PROPERTY SERVICES	LANE MARKINGS - SWIMMING POOL	2,557.50
EFT16547	14-09-2016	KERRIANNE MILLS	ASSISTING LOCAL SPORTSPERSON - NYAH MILLS	915.00
EFT16548	14-09-2016	PRO-MET EXPRESS	DELIVERY CHARGES - LIBRARY	126.10
EFT16549	14-09-2016	BODDINGTON SERVICE STATION	VEHICLE SERVICE - BT3773	669.15
EFT16550	14-09-2016	BODDINGTON GOLF CLUB	LOAF FUNDING - GOLF CLUB	940.00
EFT16551	14-09-2016	GREG DAY MOTORS	MONTHLY FUEL ACCOUNT	6,453.34
EFT16552	14-09-2016	WESTERN AUSTRALIAN LOCAL GOVERNMENT ASS.	CONFERENCE REGISTRATION - COUNCILLORS & DCCS	6,716.99
EFT16553	14-09-2016	DEPARTMENT OF FIRE & EMERGENCY SERVICES : DFES	2016/17 ESL OPTION B	85,357.00
EFT16554	14-09-2016	BODDINGTON COMMUNITY RESOURCE CENTRE INC	MEMBERSHIP	110.00
EFT16555	14-09-2016	BODDINGTON STORE	MONTHLY STATIONERY ACCOUNT	63.33
EFT16556	14-09-2016	THE LOCK MAN SECURITY	PADLOCK - SPORTS OVAL	107.92
EFT16557	16-09-2016	HERBERT & MARGARET JOHNSON	OVERPAID RENT REFUND - RETIREMENT VILLAGE	3,708.90
EFT16558	20-09-2016	BLUEPRINT ENGAGEMENT AND COMMUNICATION PTY LTD	IRSA PROJECT OFFICER	10,450.00
EFT16559	27-09-2016		REFER TRUST	
EFT16560	30-09-2016	ZURICH INSURANCE	INSURANCE EXCESS - GRADER BT002	300.00
EFT16561	30-09-2016	LOCAL GOVERNMENT MANAGERS AUSTRALIA (LGMA)	WORKSHOP REGISTRATION - SFO	270.00
EFT16562	30-09-2016	ADVANTAGE PEST CONTROL	PEST CONTROL TERMITE DETECT REPORT (ALL COUNCIL BUILDINGS)	10,805.74



LIST OF PAYMENTS SEPTEMBER 2016				
CHQ/EFT	DATE	NAME	DESCRIPTION	AMOUNT
EFT16563	30-09-2016	TONI LEANNE COLLINS	COUNCILLOR ALLOWANCES	1,375.00
EFT16564	30-09-2016	BODDINGTON TYRE SERVICE	TYRES - HOLDEN COLORADO BT030	530.00
EFT16565	30-09-2016	ABCO PRODUCTS PTY LTD	CLEANING SUPPLIES	327.89
EFT16566	30-09-2016	EDGE PLANNING & PROPERTY	TOWN PLANNING SERVICES FEE	2,150.50
EFT16567	30-09-2016	JOHN ROBERT ALLERT	COUNCILLOR ALLOWANCES	5,234.70
EFT16568	30-09-2016	PORTER CONSULTING ENGINEERS	RANFORD WATER MAIN EXTENSION	5,500.00
EFT16569	30-09-2016	ALINTA SALES	ELECTRICITY CHARGES - POOL & CARAVAN PARK	1,519.88
EFT16570	30-09-2016	COURIER AUSTRALIA TOLL IPEC	COURIER CHARGES	207.23
EFT16571	30-09-2016	BEAVER TREE SERVICES	TREE PRUNING	8,800.00
EFT16572	30-09-2016	DRUM PRINT & PUBLICATIONS	BUSINESS CARDS - P. CUPITT	124.30
EFT16573	30-09-2016	COLOR CONTRAST DECORATORS	INTERIOR PAINTING - CARAVAN PARK	2,035.00
EFT16574	30-09-2016	NEVILLE JAMES CRILLY	COUNCILLOR ALLOWANCES	1,375.00
EFT16575	30-09-2016	ALLEASING PTY LTD	JH COMPUTER EQUIPMENT LEASE	1,764.42
EFT16576	30-09-2016	KOMATSU AUSTRALIA PTY LTD	4500HR SERVICE - GRADER BT002	2,262.04
EFT16577	30-09-2016	SPYKER TECHNOLOGIES PTY LTD	CCTV CABLE REPAIRS - TV TOWER	957.00
EFT16578	30-09-2016	PEEL REGIONAL LEADERS FORUM INC.	PEEL REGIONAL LEADER FORUM BUDGET FUNDING 2016/17	14,261.50
EFT16579	30-09-2016	PARAMOUNT BUSINESS SUPPLIES PTY LTD	PIGEON HOLE UNIT - LICENSING FORMS	275.99
EFT16580	30-09-2016	CHRIS LITTLEMORE	SALARY SACRIFICE - LAPTOP	2,105.27
EFT16581	30-09-2016	DORMA AUSTRALIA PTY LTD	SERVICE SLIDING DOORS - MEDICAL CENTRE	462.00
EFT16582	30-09-2016	SNALLOW PTY LTD - T/A WALLIS COMPUTER SOLUTIONS	MANAGED SERVICES AGREEMENT - IT SUPPORT GOLD	47,881.02
EFT16583	30-09-2016	AMPAC DEBT RECOVERY (WA) PTY LTD	DEBT COLLECTION FEES - RATES & DEBTORS	1,484.60
EFT16584	30-09-2016	DAVID & ROBIN SMART	COUNCILLOR ALLOWANCES	1,375.00
EFT16585	30-09-2016	MARKETFORCE PTY LTD	ADVERTISING - DRAFT LOCAL PLANNING STRATEGY	577.87

## Attachment 8.2.2A

LIST OF PAYMENTS SEPTEMBER 2016				
CHQ/EFT	DATE	NAME	DESCRIPTION	AMOUNT
EFT16586	30-09-2016	MICHAEL PAGE INTERNATIONAL	TEMP FINANCE MANAGER	3,111.99
EFT16587	30-09-2016	SHARAN MANEZ	COUNCILLOR ALLOWANCES	1,375.00
EFT16588	30-09-2016	MARTIN SHANE GLYNN	COUNCILLOR ALLOWANCES	1,875.00
EFT16589	30-09-2016	JOHN ROBERT ALERT (RENTAL PROPERTY)	MONTHLY RENT - 26A HOTHAM AVE	1,083.33
EFT16590	30-09-2016	MOORE CONSTRUCTIONS (WA) PTY LTD	PROGRESS CLAIM 3 - BODDINGTON RECREATION CENTRE	623,725.03
EFT16591	30-09-2016	H & H ARCHITECTS	ARCHITECTURAL SERVICES - INDEPENDENT LIVING UNITS	4,785.00
EFT16592	30-09-2016	AVON WASTE	RUBBISH BIN COLLECTION SERVICE	5,599.01
EFT16593	30-09-2016	GREG DAY MOTORS	VEHICLE TOWING - FORD FALCON	220.00
EFT16594	30-09-2016	JR & A HERSEY PTY LTD	LIFTING CHAINS - DEPOT	445.50
EFT16595	30-09-2016	IT VISION	MONTHLY PAYROLL SERVICE	1,698.13
EFT16596	30-09-2016	JASON SIGN MAKERS	SIGNAGE - PRIVATE WORKS	83.60
EFT16597	30-09-2016	BODDINGTON COMMUNITY RESOURCE CENTRE INC	LOAF FUNDING	1,125.00
EFT16598	30-09-2016	A & P REID CONTRACTING	PLANT & OPERATOR HIRE	2,375.00
17550	19-09-2016	WATER CORPORATION	NEW/REDEVELOPMENT APPLICATION - NEW RECREATION CENTRE	13,793.76
DD9204.1	01-09-2016	WESTNET	INTERNET CHARGES - MEDICAL CENTRE	39.95
DD9204.2	01-09-2016	SYNERGY	ELECTRICITY CHARGES	1,808.05
DD9206.1	01-09-2016	WESTERN AUSTRALIAN TREASURY CORPORATION	Loan No. 100 Interest payment - Childcare Centre	12,031.87
DD9209.1	02-09-2016	PRINTSYNC BUSINESS SOLUTIONS	COPIER CHARGES	556.27
DD9211.1	05-09-2016	MOTORPLAN PTY LTD	CEO VEHICLE LEASE 1EXP571	1,885.66
DD9211.2	05-09-2016	WESTNET	INTERNET CHARGES - POOL & SHIRE ADMIN	169.90
DD9213.1	06-09-2016	TELSTRA	MOBILE PHONE CHARGES - SHIRE	676.86
DD9221.1	11-09-2016	WA LOCAL GOVERNMENT SUPERANNUATION PLAN	Payroll deductions	11,324.69

## Attachment 8.2.2A

LIST OF PAYMENTS SEPTEMBER 2016				
CHQ/EFT	DATE	NAME	DESCRIPTION	AMOUNT
DD9221.2	11-09-2016	WILLIAM KELVIN WALDOCK	Superannuation contributions	865.17
DD9221.3	11-09-2016	REST SUPERANNUATION FUND	Superannuation contributions	285.51
DD9221.4	11-09-2016	AMP RETIREMENT SAVINGS ACCOUNT	Superannuation contributions	128.14
DD9221.5	11-09-2016	AUSTRALIAN SUPER (WESTSCHEME)	Superannuation contributions	964.88
DD9221.6	11-09-2016	PRIME SUPER PTY LTD	Superannuation contributions	194.99
DD9221.7	11-09-2016	MLC MASTERKEY SUPER FUNDAMENTALS	Superannuation contributions	215.21
DD9221.8	11-09-2016	POLARIS HEIGHTS PTY LTD AFT INDIA BLUE SUPERANNUATION FUND	Superannuation contributions	86.76
DD9221.9	11-09-2016	BT SUPER FOR LIFE	Superannuation contributions	108.45
DD9224.1	13-09-2016	WESTERN AUSTRALIAN TREASURY CORPORATION	Loan No. 106 Interest payment - Recreation Centre	42,709.40
DD9230.1	15-09-2016	SYNERGY	ELECTRICITY CHARGES - PAVILLION/SPORTS GROUNDS	668.95
DD9230.2	15-09-2016	CANON FINANCE	KYOCERA TA3501i MONTHLY LEASE	157.30
DD9232.1	15-09-2016	WESTERN AUSTRALIAN TREASURY CORPORATION	Loan No. 102 Interest payment - Grader	9,936.60
DD9235.1	16-09-2016	SYNERGY	ELECTRICITY CHARGES	5,310.45
DD9239.1	19-09-2016	SYNERGY	ELECTRICITY CHARGES	2,003.90
DD9243.1	20-09-2016	SYNERGY	ELECTRICITY CHARGES	1,251.70
DD9248.1	21-09-2016	BOC GASES - BOC ACCOUNT PROCESSING	GAS CONTAINER FEES - DEPOT	23.06
DD9248.2	21-09-2016	TELSTRA	PHONE CHARGES - EHO RESIDENCE	44.94
DD9250.1	22-09-2016	SYNERGY	ELECTRICITY CHARGES - STREET LIGHTS	3,183.70
DD9253.1	23-09-2016	WATER CORPORATION	WATER CHARGES	2,949.86
DD9253.2	26-09-2016	TELSTRA	MOBILE & ONLINE ACCESS CHARGES	60.00
DD9255.1	25-09-2016	WA LOCAL GOVERNMENT SUPERANNUATION PLAN	Payroll deductions	11,801.67
DD9255.2	25-09-2016	WILLIAM KELVIN WALDOCK	Superannuation contributions	865.17
DD9255.3	25-09-2016	REST SUPERANNUATION FUND	Superannuation contributions	306.62

## Attachment 8.2.2A

LIST OF PAYMENTS SEPTEMBER 2016				
CHQ/EFT	DATE	NAME	DESCRIPTION	AMOUNT
DD9255.4	25-09-2016	AMP RETIREMENT SAVINGS ACCOUNT	Superannuation contributions	128.14
DD9255.5	25-09-2016	AUSTRALIAN SUPER (WESTSCHEME)	Superannuation contributions	972.38
DD9255.6	25-09-2016	PRIME SUPER PTY LTD	Superannuation contributions	194.99
DD9255.7	25-09-2016	MLC MASTERKEY SUPER FUNDAMENTALS	Superannuation contributions	215.21
DD9255.8	25-09-2016	POLARIS HEIGHTS PTY LTD AFT INDIA BLUE SUPERANNUATION FUND	Superannuation contributions	106.78
DD9255.9	25-09-2016	SUNCORP EVERYDAY SUPER	Superannuation contributions	104.55
DD9258.1	27-09-2016	SYNERGY	ELECTRICITY CHARGES - MARRADONG FIRE SHED	91.35
DD9258.2	27-09-2016	TELSTRA	PHONE CHARGES	1,575.39
DD9258.3	27-09-2016	WATER CORPORATION	WATER CHARGES	805.35
DD9260.1	19-09-2016	SYNERGY	ELECTRICITY CHARGES - SES	363.95
DD9260.2	19-09-2016	TELSTRA	PHONE CHARGES - SES LANDLINES	236.68
DD9260.3	28-09-2016	TELSTRA	PHONE CHARGES - LICENSING	25.05
DD9260.4	28-09-2016	WATER CORPORATION	WATER CHARGES	6,469.64
DD9265.1	29-09-2016	SYNERGY	ELECTRICITY CHARGES - CENTRAL PARK	15.20
DD9265.2	29-09-2016	TELSTRA	STREET WI-FI	135.00
DD9265.3	29-09-2016	WATER CORPORATION	WATER CHARGES - CEMENT WORKS	292.12
DD9267.1	30-09-2016	KLEENHEAT GAS	BULK GAS - CARAVAN PARK & PAVILLION	719.20
			<b>TOTAL MUNICIPAL</b>	<b>1,572,338.13</b>
			<b>TOTAL PAYMENTS</b>	<b>1,573,514.18</b>

8.3 PRINCIPAL ENVIRONMENTAL HEALTH OFFICER/  
BUILDING SURVEYOR:

Nil.

8.4 MANAGER WORKS & SERVICES:

Nil.

Cr Hoek left Chambers at 5:05pm having declared a Proximity Interest in Item 8.5.1 as she is joint owner of land adjoining Worsley/South 32.

## 8.5 DIRECTOR CORPORATE & COMMUNITY SERVICES:

### 8.5.1 Fire Access Track Exemptions

Location:	Harvey-Quindanning Road, Lower Hotham Road, Quindanning-Darkan Road, Crossman Road, Crossman-Dwarda Road.
Applicant:	South 32 Worsley Alumina Pty Ltd; J Nelson; R Mead; J Morgan; Newmont Boddington Gold; GR & MH Marston.
File Ref. No:	ADM0154
Disclosure of Interest:	Nil
Date:	10 October 2016
Author:	Director Corporate & Community Services
Attachment	8.5.1A Summary of exemption requests

#### Summary

Council is to consider endorsing exemptions to various owners or occupiers of properties as recommended in consultation with the Chief Bush Fire Control Officer and local Fire Brigades.

#### Background

The Fire Access Track Order for 2016/17 requires the owner or occupier of land to apply for an exemption to Council if it is considered impractical to provide Fire Access Tracks or remove flammable materials as required by the Notice, or if natural features render Fire Access Tracks difficult to install.

The owners or occupiers of land who have applied for an exemption are included at Attachment 8.5.1A.

#### Comment

The ratepayers listed at Attachment 8.5.1A have written to ensure that they comply by obtaining an exemption given the difficulty involved for them in placing Fire Access Tracks on their properties specifically as instructed by the Fire Access Track Order for 2016/17.

By being proactive they are ensuring that they are aware of the Fire Access Track Order for 2016/17 which has been put in place by Council and are trying to reach a solution for their property type in the unfortunate event of a bushfire.

#### Strategic Implications – Nil

#### Statutory Environment

##### 2016/17 Fire Access Track Order

If it is considered for any reason to be impractical to clear Fire Access Tracks or remove flammable materials as required by this notice, or if natural features render Fire Access Tracks unnecessary, you may apply to the Council in writing not later than 01 October 2016 for permission to provide Fire Access Tracks in alternative positions or to take alternative

action to abate fire hazards on the land. If permission is not granted by the Council, you shall comply with the requirements of this notice.

### Policy Implications

4.2 That a Fire Access Track notice accompany the annual Rates Notice and be placed in the Community Newsletter during August and September each year;

- i) reminding landowners of the requirements of the Fire Access Track order;
- ii) advising that inspections will be undertaken after 15 November in each year;
- iii) advising that if Fire Access Tracks are not constructed to the required standard infringement notices may be issued.

Objective:

To encourage landowners to install Fire Access Tracks in accordance with Council requirements.

Financial Implications - Nil

Economic Implications - Nil

Social Implications - Nil

### Environmental Considerations

By complying with the Fire Access Track Order ratepayers ensure that they are attempting to provide protection for life and property in the event of a bushfire, which would potentially slow down the spread of fire/damage to other properties and the need to call out emergency services to deal with such an event.

Consultation - Nil

### Options

Council can resolve:

- 1 the Officer's Recommendation;
- 2 to not endorse the Fire Access Track exemption for some or all of the applicants, requiring the applicants to comply with Council's Fire Break Order or face prosecution, giving reasons.

Voting Requirements - Simple Majority

OFFICER'S RECOMMENDATION – ITEM 8.5.1

That Council grant exemption from Council's 2016/17 Fire Access Track Order to the following properties:

Property Owner	Description of Land	Exemption Requested
South 32 Worsley Alumina Pty Ltd	Lot 5 Harvey Quindanning Road, Quindanning	Exemption from implementing Fire Access Tracks around this lot.
South 32 Worsley Alumina Pty Ltd	Lot 591 & 633 Lower Hotham Road	Exemption from implementing Fire Access Tracks around each of these lots.
JA Nelson	Lot 11 Crossman Road, Crossman	Exemption from implementing Fire Access Tracks around this lot.
R Mead	578 (Lot 63) Crossman- Dwarda Road, Crossman	Exemption from implementing Fire Access Tracks around this lot.
GR & MH Marston	35 Crossman Road Boddington	Exemption from implementing Fire Access Track to south east corner of the hill.
J Morgan	Wellington locations 1899, 2293 & 1355 at 366 Quindanning-Darkan Road, Quindanning.	Exemption from implementing Fire Access Tracks fully around these lots.
Newmont Boddington Gold	Lots 420 on DP50652, 421 on DP 50652, 500 on DP 59054, (Saddleback Treefarms), 501 on DP 5909 &, 530 on DP 228490 ( Eastern Acquired lands), Lot 10 on DP18197 (Operational/Mining Envelope and Lot 703 on DP 228588 (Hotham Farm)	Exemption from implementing Fire Access Tracks around these lots.

COUNCIL RESOLUTION                      83/16                      Moved Cr Crilly  
 Seconded    Cr Glynn                      Carried                      4/0

Cr Hoek returned to Chamber at 5:06 pm.



Property Owner	Description of Land	Exemption Requested
South 32 Worsley Alumina Pty Ltd A160	Lot 5 Harvey Quindanning Road, Quindanning	Exemption from implementing Fire Access Tracks around this lot as: <ul style="list-style-type: none"> <li>The overland bauxite conveyer (OBC) intersects the property and provides a clear break and access for emergency vehicles.</li> <li>Significant clearing of native vegetation over steep terrain would be required to install a Fire Access Track along the northern boundary of Lot 5, potentially leading to severe erosion issues.</li> <li>Since the wildfire in Feb 2015, Worsley have reinstated a trafficable break along the entire boundary of neighbouring lots 3, 4 and 6 which would provide vehicle access in the event of an emergency.</li> </ul>
South 32 Worsley Alumina Pty Ltd A1319	Lot 591 and 633 – Lower Hotham Road	Exemption from implementing Fire Access Tracks around this lot as: <ul style="list-style-type: none"> <li>The overland bauxite conveyer (OBC) intersects the property and provides a clear break and access for emergency vehicles.</li> <li>The property is bordered by state forest to the west and contains several forestry tracks that provide access to the property as well as bordering parts of the boundary.</li> <li>Balgera track intersects the property and provides access down to the river.</li> <li>Significant clearing of native vegetation over extremely steep and rocky terrain would be required to install a Fire Access Track along the northern and southern boundaries of the property.</li> </ul> <p>The property is bordered by the Hotham River to the east and a trafficable Fire Access Track exists on the eastern side of the river.</p>
JA Nelson A111	Lot 11 Crossman Road, Crossman	Exemption from implementing Fire Access Tracks around this lot as: <ul style="list-style-type: none"> <li>Due to steep and rocky nature of land, that Fire Access Tracks be installed at strategic locations where they can be provided.</li> <li>There is an access track installed at the road frontage and other locations on the property.</li> <li>A fire prevention burn was conducted 29/10/15 from the road frontage for up to 200 metres.</li> </ul>
R Mead A1671	578 (Lot 63) Crossman-Dwarda Road, Crossman	Exemption from implementing Fire Access Tracks around this lot as: <ul style="list-style-type: none"> <li>The rear of the property is both rocky and dense and unable to access.</li> <li>Fire Access Tracks are able to be installed on the front and side of the property for three-quarters of the block.</li> </ul>
GR & MH Marston	35 Crossman Road Boddington	Exemption from implementing Fire Access Track to south east corner of the hill as the area is steep and rocky.
J Morgan A107	366 Quindanning-Darkan Road, Quindanning.	Exemption from implementing Fire Access Tracks around this lot as: <ul style="list-style-type: none"> <li>Very steep and rough terrain on eastern boundary.</li> <li>Access Tracks have been provided at the bottom of the slopes.</li> </ul>

Property Owner	Description of Land	Exemption Requested
Newmont Boddington Gold A1366	Lots 420 on DP50652, 421 on DP 50652, 500 on DP 59054, (Saddleback Treefarms), 501 on DP 5909 &, 530 on DP 228490 ( Eastern Acquired lands), Lot 10 on DP18197 (Operational/Mining Envelope and Lot 703 on DP 228588 (Hotham Farm)	Exemption from implementing plantation standard Fire Access Tracks is sought and private bush holdings/uncleared lands greater than 50 hectares as: <ul style="list-style-type: none"> <li>• Newmont maintain a 24 hour emergency response capacity at the mine</li> <li>• Areas have a well-developed and maintained road network</li> <li>• NBG maintains fire firefighting equipment at the mine and Saddleback Treefarms properties.</li> <li>• Interagency agreement with DPaW for prescribed burning and wildfire suppression 2012</li> </ul>

## 8.6 CHIEF EXECUTIVE OFFICER:

### 8.6.1 Action Sheet

Disclosure of Interest: Nil  
 Date: 10 October 2016  
 Author: Chris Littlemore

#### Purpose of Report

To bring forward Councillors information the Action Report with actions taken on previous Council resolutions.

Meeting Date	Resolution Number	Responsible Officer	Subject	Date Completed	Comments Current Status
20/09/2016	78/16	DCCS	Freedom of Information Statement	22/9/2016	Letters and email sent out closed
20/09/2016	74/16	DCCS	Appointments to Cemeteries Advisory Committee	22/09/2016	Letters sent to Appointees
20/09/2016	76/16	CEO	Formation of Boddington Sport & Recreation Advisory Committee	07/10/2016	Letter sent to Sporting Clubs requesting nomination

For information only.

Cr Hoek left Chambers at 5:07pm having declared a Financial Interest in Item 8.6.2 as she is the joint owner of property adjoining Worsley/South 32.

## 8.6.2 Request for Haul Road Crossing – Lower Hotham Rd

Location:	Central section of Lower Hotham Road
Applicant:	South32 Worsley Alumina Pty Ltd
File Ref. No:	AMD0686
Disclosure of Interest:	Nil
Date:	10 October 2016
Author:	Chief Executive Officer
Attachments:	8.6.2A Letter of Application and Map

### Summary

South32 Worsley Alumina Pty Ltd (Worsley) requests approval for the temporary closure of Lower Hotham Road to all traffic from time to time to allow mining equipment to safely cross Lower Hotham Road and facilitate the extraction of State Bauxite Reserves.

The period of the closure sought is from 1 July 2017 to 30 June 2024.

### Background

The requirement for this proposed closure is to close the road under two different scenarios. Scenario one, between 6 AM and 6 PM, automatic boom gates will only close when a mine vehicle crosses Lower Hotham Road. That is, general traffic will have right-of-way. In the scenario to between 6 PM and 6 AM, automatic boom gates will be closed across Lower Hotham Road. Mine traffic will have right-of-way and general traffic will need to stop until the boom gates open.

Alternative access for residents and emergency services is not required.

### Comment

This process was followed at Morts Road, and did not cause great inconvenience to residents.

### Strategic Implications

Agreement to the closure will allow Worsley to economically mine the resource as a part of its normal routine.

### Statutory Environment

Council has the authority under the Local Government Act to allow roads to be closed at particular times and for particular purposes. The main requirement is that adequate public notice of the proposal is given and to consider those submissions.

Policy Implications - Nil  
Financial Implications – Nil  
Economic Implications

Approval of the road will in a small way assist in employment at the mine.

Social Implications - Nil  
Environmental Considerations - Nil

### Consultation

Worsley has considered this matter extensively, including deliberating with representatives from the Shire, impacted landholders and users of the road. Worsley expresses the view that alternate night and day right-of-way is a good compromise based on traffic volumes.

Worsley will continue to liaise with key road users to understand the impact the intermittent closure will have on them.

### Options

Council may accept, reject or amend the proposal to include conditions however, the applicant always has the right to appeal to the State Administrative Tribunal.

Voting Requirements – Simple Majority

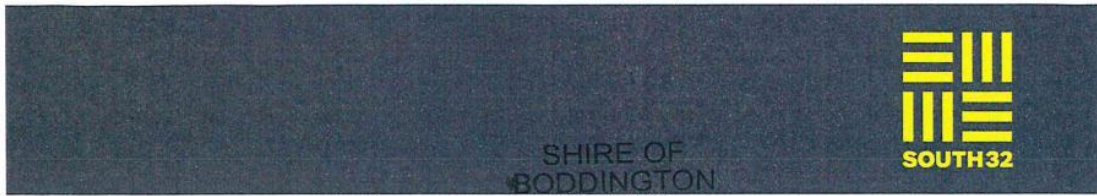
OFFICER'S RECOMMENDATION – ITEM 8.6.2
---------------------------------------

That Council will, subject to public submissions:

1. Support the application of South32 Worsley Alumina Pty Ltd (Worsley) to temporarily close Lower Hotham Road for the period 1 July 2017 to 30 June 2024 for the purpose of extracting bauxite.
2. Advise Worsley that it will be required to meet the following conditions:
  - Meet the cost of formal advertising and signage;
  - Be responsible for the effective and efficient operation of the boom gates;
  - Maintaining advanced warning signals and signs in working order at all times when mining activities require the use of the crossing;
  - Ensure the general public have right-of-way between 6 AM and 6 PM;
  - Re-instate Lower Hotham Road at the conclusion of the project.
3. That South 32 provide plans for the proposed crossing showing construction details including longitudinal and cross sections.
4. That South 32 liaise with Council's Manager Works & Services to determine the best location for the crossing between the conveyor and FortyTwo Hollow Road.

COUNCIL RESOLUTION	84/16	Moved Cr Crilly	
Seconded	Cr Glynn	Carried	4/0

Cr Hoek returned to Chambers at 5:10pm



3 October 2016

Chris Littlemore  
 Chief Executive Officer  
 Shire of Boddington  
 PO Box 4  
 Boddington WA 6390

SHIRE OF BODDINGTON  
 RECEIVED  
 04 OCT 2016  
 Distribute to:  
 DCS  DSP  MINS  
 PEHO  FM  CEO  
 EMWS  TPC  MCS

South32  
 108 St Georges Terrace  
 Perth WA 6000 Australia  
 T +61 8 9324 9000  
 F +61 8 9324 9200  
 south32.net

File No NDM 0307,  
 Date \_\_\_\_\_  
 Initial \_\_\_\_\_

Dear Chris

**Request for level haul road crossing on Lower Hotham Road**

South32 Worsley Alumina Pty Ltd (Worsley) formally requests approval from the Shire of Boddington for the installation and operation of a level haul road crossing (automatic railway crossing type with boom gates) on Lower Hotham Road (South of Overland Bauxite Conveyor) as per the attached proposal (Appendix).

The crossing is planned to be operational day and night for a period of seven (7) years commencing July 2017, and will allow Worsley to extract resources west of Lower Hotham Road (on either side of the conveyor) as per Appendix. Construction of the level crossing is planned to commence at least six (6) months prior to the commencement of operation, however this will be dependent on the approval period. During the construction period a temporary road diversion will be required to keep the road open to public traffic.

Worsley expects the crossing to be in use for the majority of the operation period however there will be times when no mining activity is taking place west of the road. In such circumstances the crossing will be open to general traffic.

Worsley has considered this matter extensively including consulting with impacted key road users, representatives from the Shire of Boddington and the Mine Community Liaison Committee. Based on the feedback received, the public traffic will have right of way during day hours 0600-1800 (based on traffic analyses) and the mine will have right of way during night hours 1800-0600. Adequate advanced warning signage will also be installed on Lower Hotham Road on approach to the crossing (as per Appendix). Worsley will continue to liaise with key road users where requested and provide updates on approvals, construction and commencement phases.

In 2011, Worsley consulted with an external engineering specialist to study the crossing concept, which included considering Main Roads WA standards. Based on this study and traffic counter analysis completed more recently, Worsley will be required to request Main Roads WA to reduce the speed limit to 80km/h on either side of the

Registered Office Level 35 108 St Georges Terrace Perth WA 6000 Australia  
 ABN 84 093 732 597 Registered in Australia

Register:  
 ABN 84 0

crossing (as per Appendix). This will be done in consultation with the Shire of Boddington.

Please contact Amanda Blunt on 9734 9536 if you require further information in consideration of this request.

Yours sincerely



**Alysia Tringrove**  
Vice President Operations Mine & Materials



**Appendix**

**Location**

The following maps show the location of the proposed crossing at Lower Hotham Road.



Image 1: Proposed crossing location



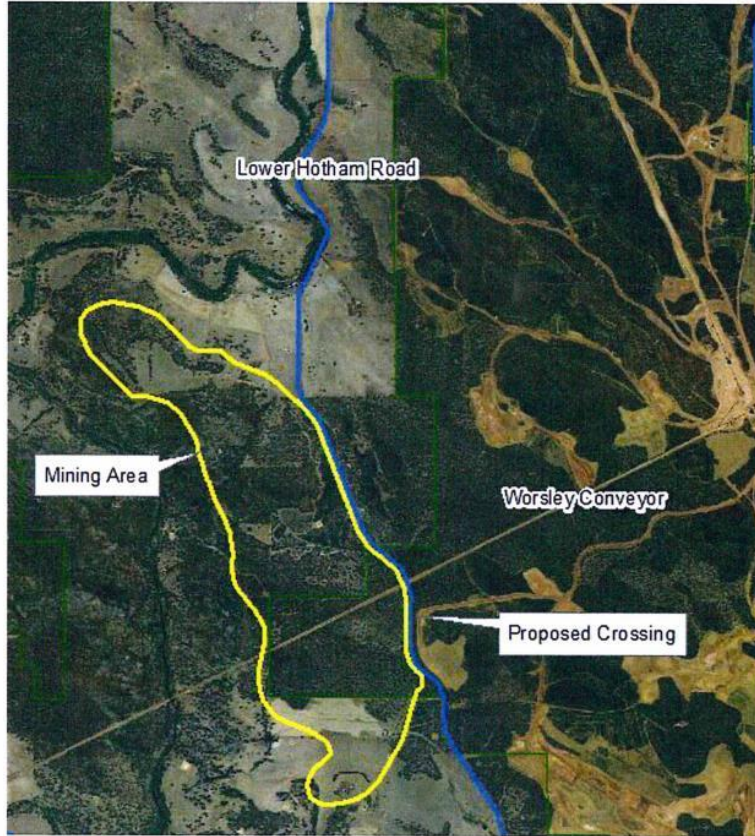


Image 2: Proposed crossing location and mining area



### Proposed Crossing Design

The controlled crossing model will be similar to a controlled railway crossing intersection. The public road boom gates will be operated by weight sensors placed under the road on approach to the crossing. The haul road boom gates will be controlled by a push button.

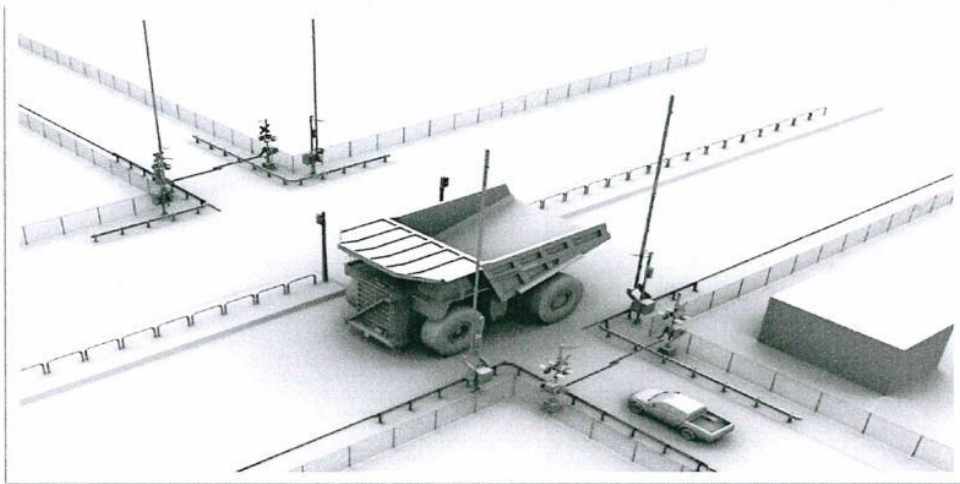


Image 3: Proposed controlled crossing model using automatic boom gates



#### Advance Warning Signage

Signage and advanced warning signals will be placed on either side of the crossing in locations that provide adequate notice of the crossing hazard ahead. The signals will be similar to that used at major intersections and railway crossings.



Image 4: Typical advance warning signal installed on either side of the crossing. The location of the sign from the crossing will be calculated as per Main Roads WA standards.

#### Haul Road Intersection - Road Strengthening

As Worsley's mining fleet would be required to travel over Lower Hotham Road it is proposed the section of road be strengthened to avoid damage to the existing bitumen road. An independent engineering consultant would be engaged to design the road strengthening in line with any Main Roads WA standards. The proposed solution would be discussed and submitted to the Shire Manager-Works & Services for approval prior to commencing construction works.

#### Speed Zoning

To improve public safety and operation of the crossing, a reduce speed limit on Lower Hotham Road through the controlled intersection would be necessary. It is proposed this speed to be reduced to 80km/h which conforms to Main Roads WA standards for Safe Intersection Sight Distance (SSID). It will be necessary to reduce the speed limit on Lower Hotham Road through the controlled intersection area to 80km/h. Provision of rumble strips will be considered on Lower Hotham Road on approach to the crossing to raise driver awareness of the crossing. The exact location of rumble strips will be based on Main Roads WA standards.

### Traffic Counter Data Analysis

A traffic counter data analysis for Lower Hotham Road was conducted using Shire of Boddington equipment from 3 September 2015 to 22 October 2015 (50 days). Two counters were placed:

1. At Gravel Pit Entrance on Lower Hotham Road
2. Approximately near the proposed crossing location near Worsley's conveyor

In general the main findings were:

- Peak traffic hours were 0600 to 1800 and accounted for about 87% of vehicle movements on the road
- On an average 115 vehicles per day used the road
- Light vehicles accounted for an average of 88% of vehicle movements per day Light vehicles with trailers and two axle trucks / buses accounted for 10% of light vehicle movements per day
- Double road trains accounted for less than 1% of the traffic per day
- The amount of traffic between Tuesday to Thursday was relatively constant compared to the weekend
- Traffic was consistently heavier over the weekend

### 8.6.3 Waiving of Fees for Boddington Arts Council

Location:	Boddington Town Hall
Applicant:	Eugene Smalberger – Boddington Arts Council
File Ref. No:	AMD0011
Disclosure of Interest:	Nil
Date:	12 October 2016
Author:	Chief Executive Officer
Attachment:	8.6.3A Letter from Boddington Arts Council

#### Summary

Council is to consider waiving the cost of Town Hall Hire for the Boddington Arts Council for the period of 30 Oct to 7 Nov for the Boddington Arts Council Open Day and Arts Exhibition held on the Boddington Rodeo Weekend.

#### Background

The Boddington Arts Council hold their Annual Art Exhibition each year on Rodeo weekend. The exhibition is a promotion of local community members and their talents. This event provides entertainment to the many visitors to town as well an opportunity to promote the town of Boddington. The Arts Exhibition traditionally is open from Thursday night through to Sunday; awards are presented within this timeframe.

#### Comment

In previous years the hire fee for the Town Hall has been waived for the Arts Council. This has however never been adopted into council policy. In 2015 Council waived these fees and asked that this request be put to council annually.

#### Strategic Implications

The Strategic Plan identifies the importance of building a strong and healthy community by providing an inclusive and supportive community as well as providing leisure activities for community members.

Statutory Environment - Nil  
Policy Implications - Nil

#### Financial Implications

The Town Hall is leased at a rate of \$34.35 per day and \$52.00 per night to local organisations. The Boddington Arts Council has requested to have exclusive use of the Town Hall for a week inclusive of the 30 October to the 7 November. This will result in two other groups being unable to use the hall with their usual bookings during that timeframe.

Waiving the fee for the Boddington Arts Council is a loss of \$725.15 of Council revenue.

#### Economic Implications

Rodeo weekend provides Boddington with the biggest attraction of the year. Each year the event is well attended and this provides the community with an opportunity to promote Boddington to visitors as well as use the opportunity to fundraise for individual groups throughout the weekend.

#### Social Implications

The Arts Exhibition is an additional attraction within Boddington on Rodeo Weekend for locals and visitors alike.

#### Environmental Considerations - Nil

#### Consultation

Eugene Smalberger, Boddington Arts Council President

#### Options

Council can resolve to:

1. support the Officer's Recommendation,
2. support the Officer's Recommendation with a different financial commitment; or
3. not support the Officer's Recommendation, giving reasons.

#### Voting Requirements – Simple Majority

OFFICER'S RECOMMENDATION – ITEM 8.6.3
---------------------------------------

That council support the waiver of fees for the hire of the Town Hall for the Boddington Arts Council in 2016 for the period 30 October – 7 November 2016.

COUNCIL RESOLUTION	85/16	Moved Cr Hoek
Seconded	Cr Manez	Carried 5/0



# Boddington Arts Council

SHIRE OF BODDINGTON  
RECEIVED

12 OCT 2016

Distribute to:

- DCS  DSP  MINS
- PEHO  FM  CEO
- MWS  TPC  MCS

Telephone (08) 9883 8282  
PO Box 98  
Boddington WA 6390  
ABN 81 950 237 136  
October 2016

Boddington Shire  
PO Box 4  
Boddington, WA 6390

File No APM 0011  
Date \_\_\_\_\_  
Initial \_\_\_\_\_

## Boddington Arts Council Open Day & Arts Exhibition

To Whom it concern,

As one of our sponsors in past years we would like to again extend an invitation for your organization to sponsor the Boddington Arts Council Open Day & Arts Exhibition 2016.

The Exhibition last year was very successful so once again in 2016 we will be hosting the Open Day in November. We are opening on the evening of Thursday 4<sup>th</sup> November, through until Sunday 6<sup>th</sup> November 2016.

Our theme this year is "Wild west", celebrating the 40<sup>th</sup> anniversary of the Lions Rodeo. All members will participate to make the day a successful promotion of the Craft Centre and Boddington town as a "great place to live".

*In light of the above we would kindly ask you to wave the cost of the Hall rental as booked for the period from Sunday 30 October to Monday 7 November 2015.*

We would appreciate your early reply, and acknowledgment of your anticipated sponsorship will be given at all possible opportunities.

Yours faithfully  
Eugene Smalberger  
President – Boddington Arts Council

8.6.4	Actions Performed Under Delegated Authority For The Month Of September 2016
-------	---

File Ref. No: AMD0686  
 Disclosure of Interest: Nil  
 Date: 11 October 2016  
 Author: Chief Executive Officer  
 Attachments: Nil

Summary

To report back to Council actions performed under delegated authority for the month of September 2016.

Background

There is no specific requirement to report on actions performed under delegated authority. But to increase transparency this report has been prepared for Council and includes all actions performed under delegated authority for –

Development Approvals issued

Building Permits issued;

Health Approvals issued;

One off delegations to the Chief Executive Officer;

Affixing of Common Seal

Comment –

The following tables outline the action performed within the organization relative to delegated authority for the month of September and are submitted to Council for information.

**Common Seal**

Date Affixed	Documentation
20/09/2016	Deed for the funding and provision of a reticulated water supply to Lot 9001 River Road, Ranford
20/09/2016	Grant of Easement over Lots 20 and 21 of Deposited Plan 402624 (John subdivision)

**Building Applications**

Application No.	Applicant	Lot & Street	Type of Building Work

**Finance**

Date	Applicant	Details
14/9/16	55 Rates Assessments	Total of \$247.29 written off

**Development Approvals**



Application No.	Applicant	Lot & Street	Type of Approval
A1281	Myles Kelly	Lot 108 Littleton Rise	Outbuilding

#### Subdivision Applications

Application No.	Applicant	Lot & Street	Action
148615	Ausurv Surveyors	Lots 7, 8 & 15 Bannister-Marradong Road,	Cleared subdivision conditions and endorsed Deposited Plan
154187	Brown McAllister Surveyors	Lot 55 Twin Bridges Place	Recommended conditional subdivision approval to WAPC
154290	Harley Dykstra	Lot 118 Mitchell Crescent	Recommended conditional subdivision approval to WAPC

Strategic Implications - Nil

#### Statutory Environment

-

Regulation 19 of the *Local Government (Administration) Regulations 1996* requires delegates to keep a record of each occasion on which they exercise the powers or discharge the duties delegated to them.

Policy Implications - Nil

Financial Implications - Nil

Economic Implications – N/A

Social Implications - Nil

Environmental Considerations – N/A

Consultation - Nil.

Voting Requirements – Simple Majority

OFFICER'S RECOMMENDATION – ITEM 8.6.4
---------------------------------------

That Council accept the report outlining the actions performed under delegated authority for the month of September 2016.

COUNCIL RESOLUTION	86/16	Moved Cr Manez
Seconded	Cr Glynn	Carried 5/0

9. ELECTED MEMBERS' MOTION OF WHICH PREVIOUS MOTION HAS BEEN GIVEN:

Nil

10. URGENT BUSINESS WITHOUT NOTICE WITH THE APPROVAL OF THE PRESIDENT OR MEETING:

Nil

11. CONFIDENTIAL ITEM:

Nil

12. CLOSURE OF MEETING:

With no further business to discuss the Shire President, Cr Allert, closed the meeting at 5:15pm.

These minutes were confirmed by the Council as a true and accurate record at the Ordinary Council Meeting held on Tuesday 15 November 2016

.....  
J R ALLERT  
(President)