



Proposal to the Councillors of the Shire of Boddington

by the Progress Group

to upgrade the Visitor Centre



PROGRESS GROUP DETAILS

Elected/Official Progress Committee

President	Eugene Smalberger
Vice President	Lee Lewis
Secretary	Lucie Tota
Treasurer	Robbie Eloff
Member	Joy Lewis
Member	Loren Bryant
Member	Andries Smalberger

Sub-Committee for this Project

Design	Eugene Smalberger
Project Manager	Lucie Tota
Build & Structure	Andries Smalberger
Graphic design	Ane Gous
OH&S	To be sourced
QA/QC	To be sourced

Legal Details of Incorporated Group

ABN no	181 9799 0825
IARN no	A1031942F
Last AGM	13/01/2024
Bank	NAB Narrogin
Last report DMIRS	22/01/2024
Insurer	AON PTPRO2300237

OUR AIM

We have taken note of the 'Community Consultation' information provided to us. Our aim is to turn the current space into a colourful, welcoming area for young and old to enjoy, learn and interact with.

We will be drawing on local talent and skills to bring our vision to life. We have had many meetings and phone calls with different groups and individuals.

We plan to utilise the existing wall, floor and ceiling space, make some changes to the built-in cupboards, use some of the display boxes on wheels and add three wheeled boards to the one existing wheeled board to accommodate four television sets to be used by Newmont, South32, the PHCC and the Shire of Boddington as a looped presentation space without sound.

We have stayed away from goggles and head phones due to the hygiene aspect. These will need to be cleaned after every use. There being no attendant in the room will make this impossible.

Although the space will operate independently from the library and the café, opening hours will need to fall in line with the rest of the building. There will be no need for an attendant.

OUR CONCEPT

We aim to create a room that depicts:

- life in Boddington
- the history of wool, wood, rail and people
- mining of gold, copper & bauxite
- fauna and flora of our region
- samples of local art and craft
- promote tourist attractions

OUR MISSION

The aim is to create an area that:

- is immersive for both tourists and locals
- is for young & old
- teaches in an informal way
- includes sensory experiences
- evokes emotion
- is created and designed by locals

THE ROOM NEEDS TO BE:

- durable
- child friendly
- safe
- inclusive
- interesting
- mostly self-maintained
- labelled in English, Latin & Noongar

A NEW NAME

We suggest a town wide competition to come up with a catchy name for the new Visitor Centre.

SKILLS WHICH COULD BE REQUIRED TO HELP INSTALL DISPLAYS

- Electrician
- Carpenter
- Builder
- Painter
- General handyman

MACHINERY THAT COULD BE REQUIRED TO INSTALL DISPLAYS

- Truck
- Crane or other heavy lifting gear

CONSULTANTS

- Sue Henrickson who runs the Heritage Room at the BCRC will be our historical go-to person.
- Greg Marston is an expert on birds. He will also help with the correct labelling of fauna and flora in English, Latin and Noongar.
- Other experts to be added as required.

QR CODES

QR codes will be added to most of the displays. It is the way of the future and we need to stay current and keep up with the latest technology. It is also very easy to go online to update the information attached to a QR code without ever having to change the QR code itself. We will provide a short explanation on how to use a QR code at the entrance to the display. QR codes can take the visitor directly to:

- Video clips
- Websites
- Data sites
- Facebook pages
- The Shire Website on topic

PAYMENT TO ARTISTS AND TRADES

All groups/persons need to provide us with a budget broken down into their hourly rate and their materials. This will be the budget they need to stick to. We suggest payment be made by the Shire into the Progress Group's bank account. The Progress Group will be able to provide bank statements of money being funnelled through our account.

HANDOVER TO THE SHIRE

We plan to have the room complete and ready for visitors on the Rodeo weekend. Once the construction phase is complete, we will hand the Centre over to the Shire to run and maintain. The leadlight group will make their contribution after the opening of the new Centre and the Progress Group can be called upon to assist in this if the Shire so requires. A Memorandum of Understanding could be set up if deemed necessary. The Shire will be responsible for:

- keeping the room clean.
- replacing brochures, quizzes and colouring-in pages
- upkeep of the building, eg replacing lightbulbs, broken windows, etc
- **** This list is probably incomplete and will need further discussion**

FINAL INSPECTIONS

We suggest a Safety Inspection by a Safety Officer who is familiar with construction prior to opening to ensure all displays are deemed safe and all building codes have been met.

A QA/QC inspection might be wise to ensure all Shire processes and procedures have been followed.

WE CONSULTED WITH:

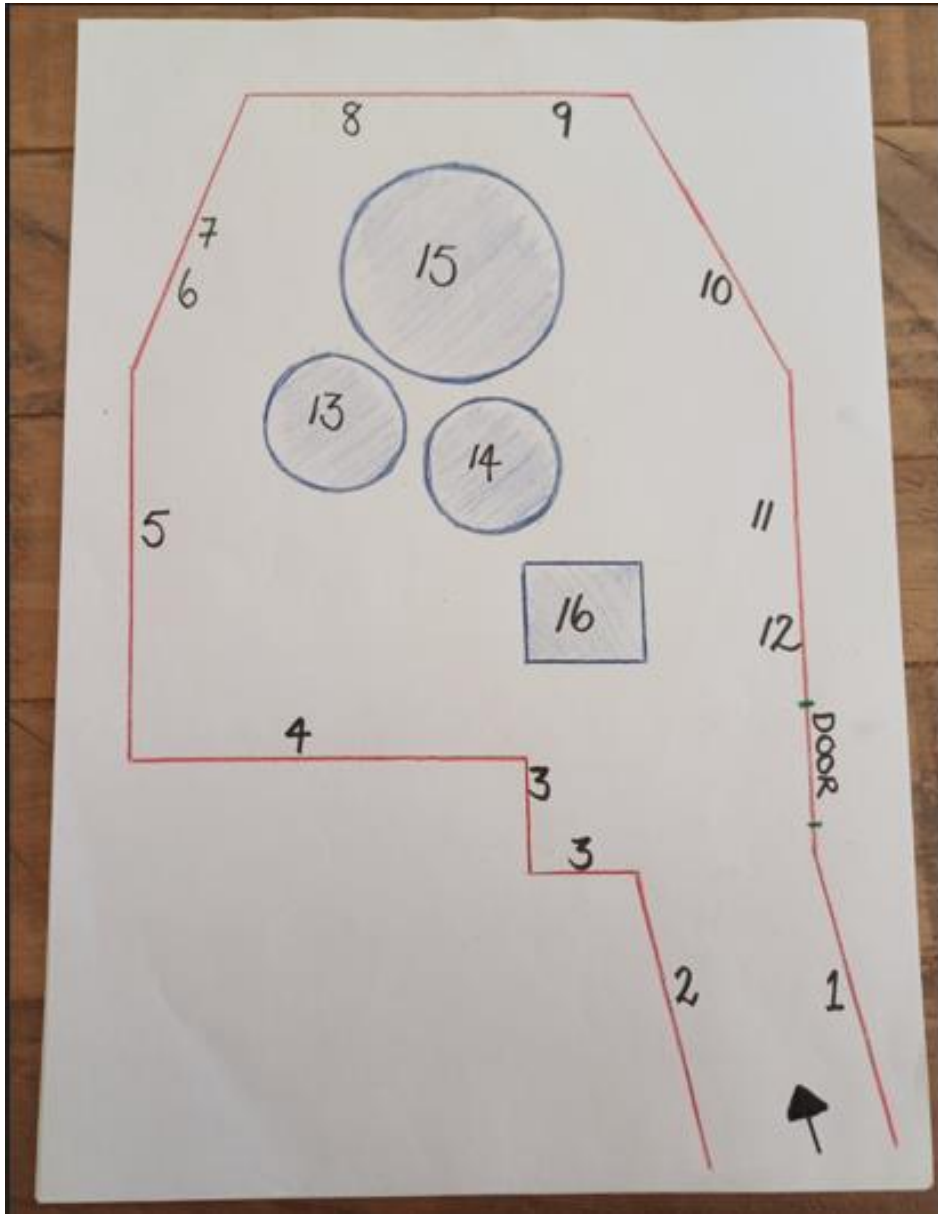
- Peel Harvey Catchment Council (PHCC)
- Friends of the Reserve
- BCRC Heritage Room
- Boddington Art Council
- Newmont
- Saturday Artists
- South 32
- Shearing Historian
- Aboriginal Elder
- Railway Historian
- Bodd News

- Community members
- The Lead Light Group
- Gabe Roberts

A total of 25 people.

DETAILED EXPLANATION OF OUR VISION

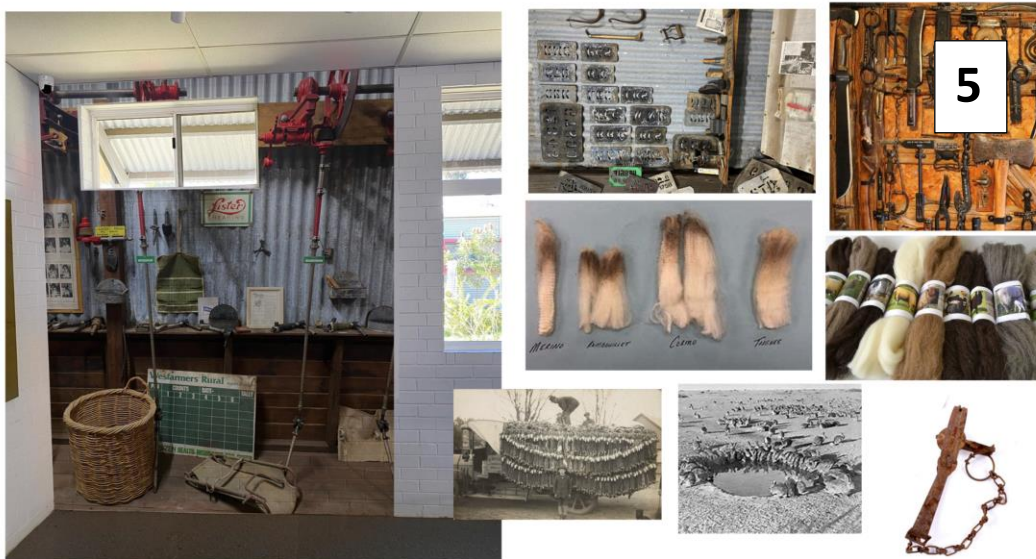
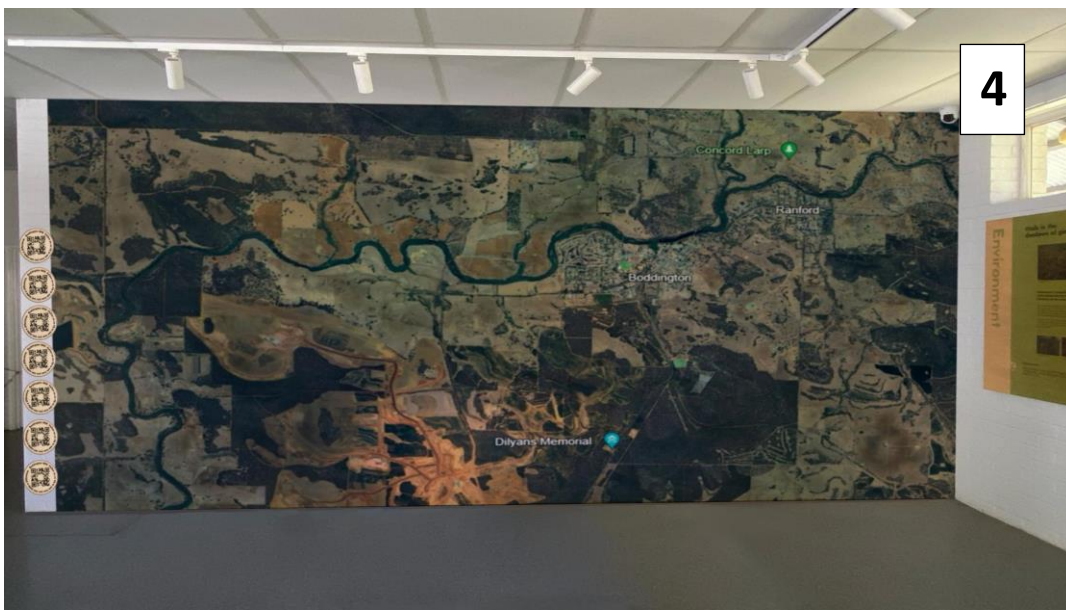
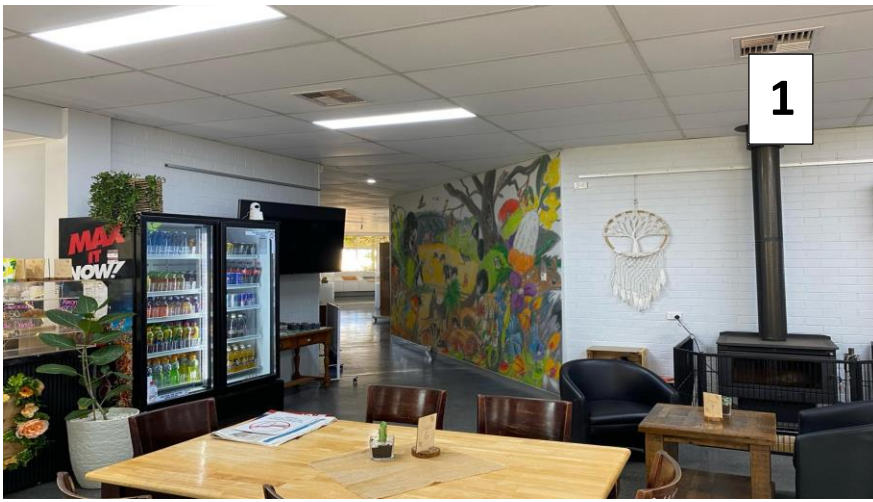
Drawing not to scale



Below table refers to the drawing above. The numbers on the drawing correlate with the numbers in the table and with the proposed designs below the table. **Highlighted in yellow denotes final decision has not been made.**

Number	Responsible group/person	Activity
1	Saturday Artists	Mural of rural Boddington landscape featuring fauna & flora, the Marradong hills, Kings Cottage and farming. This mural will draw the visitor into the space.
2	TBA	Picture of a haul truck mounted in a slice of a haul truck tyre.

3	TBA	Rock collection on loan from Newmont OR TV screen depicting shorts clips of life in Boddington eg. Medieval fight scene, drone flight over the Hotham River, a mine blast, etc.
4	Shire Survey map	Aerial view of the Shire of Boddington with number references connected to QR codes.
5	Rodney Reid	Blacksmithing, rabbit trapping, sheep farming including a sheep shearing cradle and sheep shearing tools from Rodney's Museum. To be installed by Rodney.
6	PHCC & FoR	A forest image in the background with real tree trunks in the foreground. Trees will have leaves painted on the ceiling, real bark, seed pods and hollows hiding little animals. Protected from touching and dust by perspex.
7	Leadlight Group	They will produce either a plant or an animal to add to the top 4 windows in the previous display (#6). To be added after the opening of the new Centre.
8	History of Logging	Rodney Reid and Jim Nelson will display a number of axes and different types of logs – probably as slices.
9	History of the Railway	Jim Nelson, being the expert in this field, will be in charge. He can provide a piece of a sleeper, a piece of a train wheel and a piece of railway line. He also has a very old map which we can copy. Wayne Boyd's replica of the Boddington Station and original train will form part of this display.
10	South32	Will probably display something to do with their longest conveyor belt.
11	Debbie Thorne	Aboriginal wall with didgeridoo. Rainbow serpent to be added last so it can flow through the room.
12	BAC	A glass, locked cupboard on the wall to display the winners of the annual art competition. The display will be updated by the BAC on an annual basis.
13	Katelyn Isberg	A polymer clay, miniature, typical farm scene called 'Home among the gum trees'. To be displayed in one of the wheeled circular display units.
14	Debbie Thorne	Bush tucker/bush medicine/bush soap to be displayed in one of the wheeled circular display units
15	Newmont	The biggest wheeled, circular display unit will be used by Newmont. Design to be finalised
16	PHCC/Newmont/S32/Shire	Looped information on 4 separate televisions displayed back-to-back in a square. Each company is responsible for keeping their information current.





Combined Nature Concept

8 & 9



Famous locals



Aboriginal Wall

All fauna & flora in room will be labelled in Latin, English & Noongar.

Bushtucker to be painted on wall.

Perspex display boxes containing:

- Dried plants & seeds,
- Soap made locally with ingredients displayed
- Artifacts

11 & 14





Interactive:

- Sensory
- Rubbing
- Coloring in – Main mural
- Quizzes
- Hidden fauna & flora

